

RHIC Machine/Detector Planning Meeting

Agenda

24 Jan 06

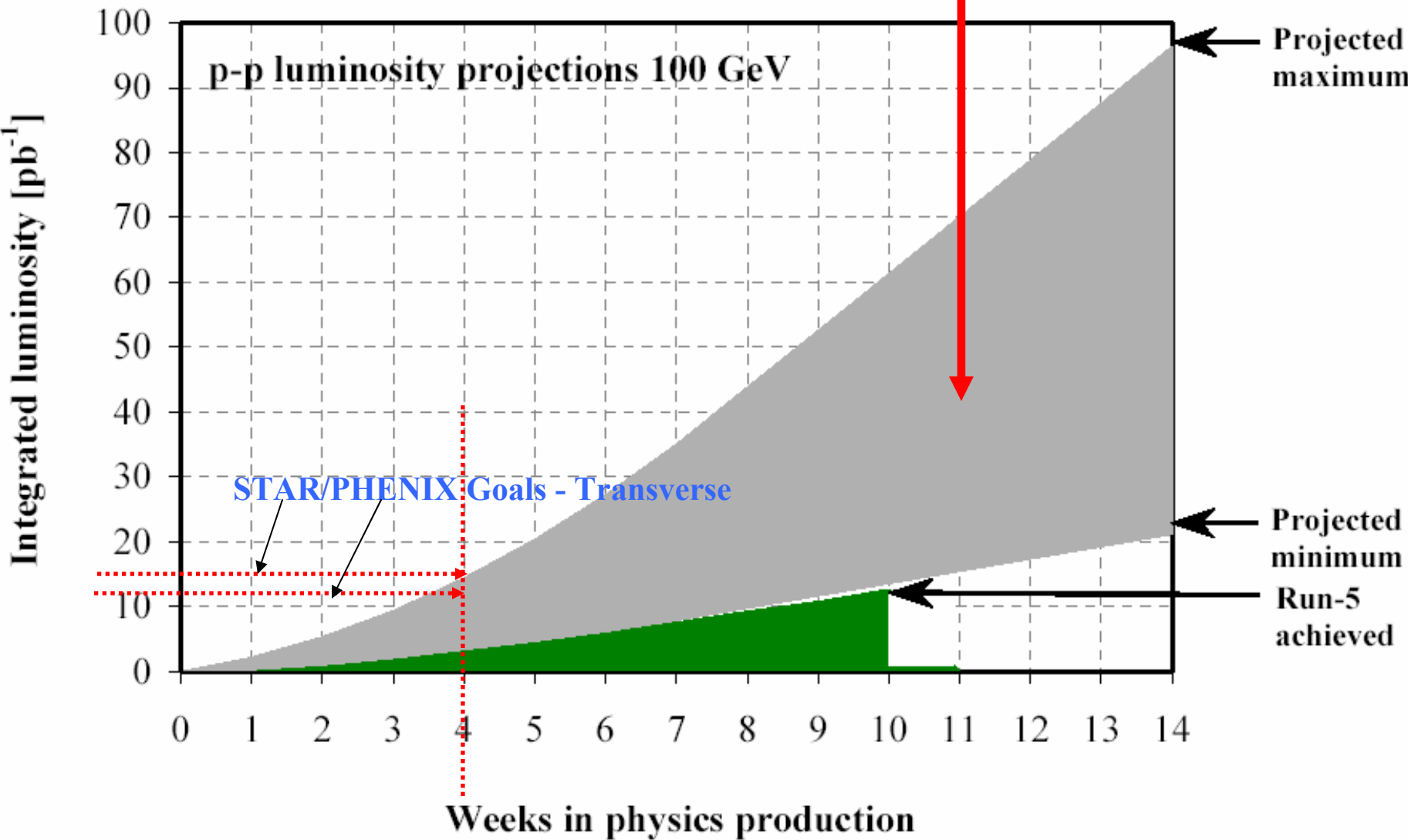
- **Scheduling Physicist (Brown) - Scheduling issues**
- **New Guidance – what’s new: W. Fischer**
- **Experiments – STAR, PHENIX, BRAHMS**
 - **Comments on the new C-AD guidance for $\sqrt{s} = 62.4$ GeV luminosity**
 - **progress on joint STAR and PHENIX $\sqrt{s} = 200$ GeV run plan**
- **Machine (Ptitsyn) - issues**
- **AGS Polarimeter (Huang) - issues**
- **RHIC Polarimeters (Bunce) – issues**
- **Jet Target (Makdisi) - issues**
- **RCF (Throwe) - issues**

Experiment Goals (needs to be checked)

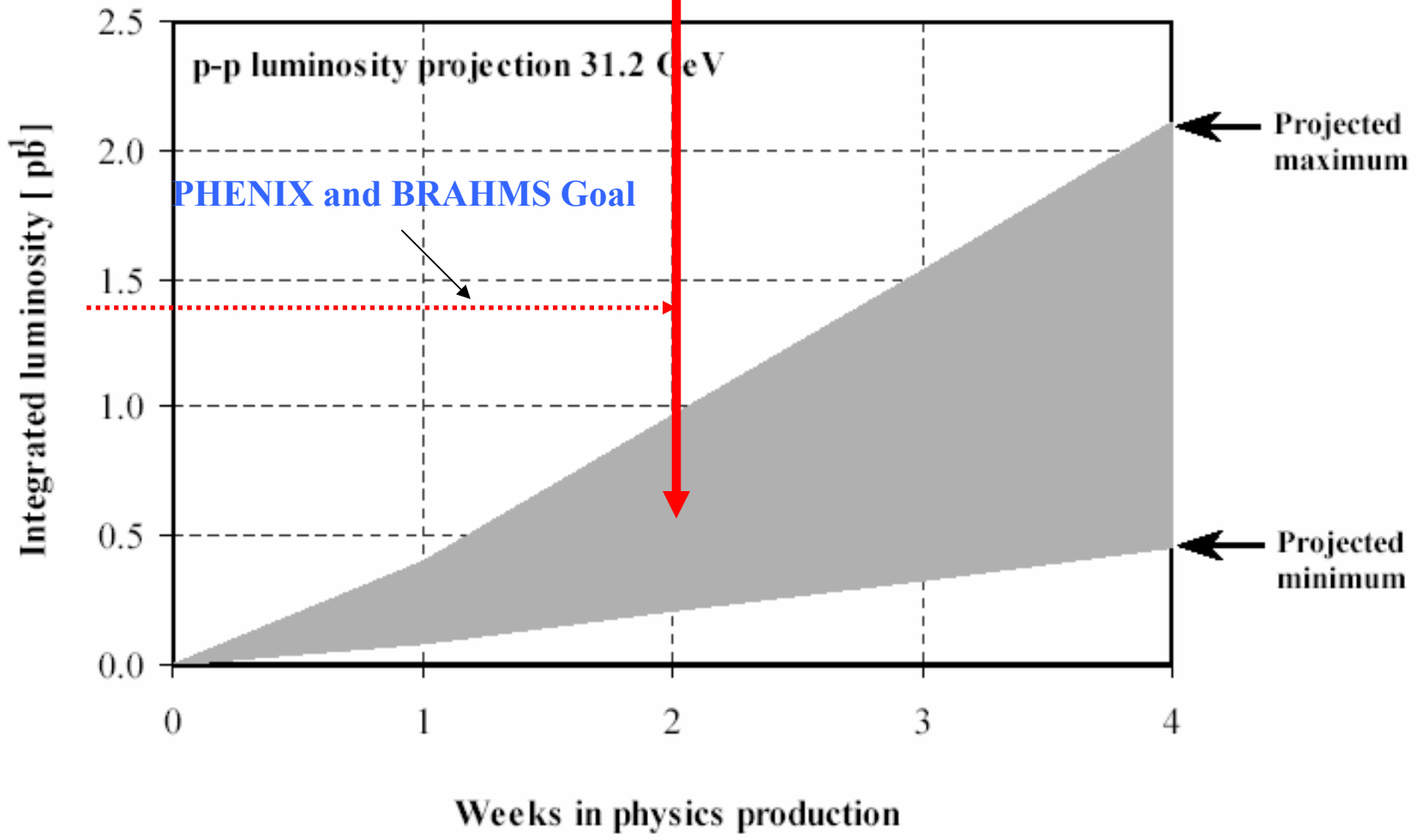
	<u>\sqrt{s}</u>	<u>Pol. Config.</u>	<u>Recorded L</u>	<u>Delivered L</u>	<u>Pol</u>	<u>weeks</u>
PHENIX:	200 GeV	Radial	5-7 pb ⁻¹	12-17 pb ⁻¹	≥ 50%	3-4
	200 GeV	Longitudinal	○ pb ⁻¹	○ pb ⁻¹	≥ 50%	7
	62.4 GeV	Trans (Radial?)	0.6 pb ⁻¹	1.4 pb ⁻¹	≥ 50%	2
	*22 GeV		4 nb ⁻¹	10 nb ⁻¹		≤ 0.4
STAR:	200 GeV	Transverse	5 pb ⁻¹	15 pb ⁻¹	≥ 50%	~ 4
	200 GeV	Longitudinal	10 pb ⁻¹	30 pb ⁻¹	≥ 50%	~7
BRAHMS:	62.4 GeV	Transverse	○ pb ⁻¹	1.6 pb ⁻¹	~ 50%	2

* Not in present plan

11 physics weeks at 200 GeV, (20 weeks cryo operation)



2 physics weeks at $\sqrt{s} = 62.4$ GeV




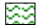


RHIC Machine/Detector Planning Meeting

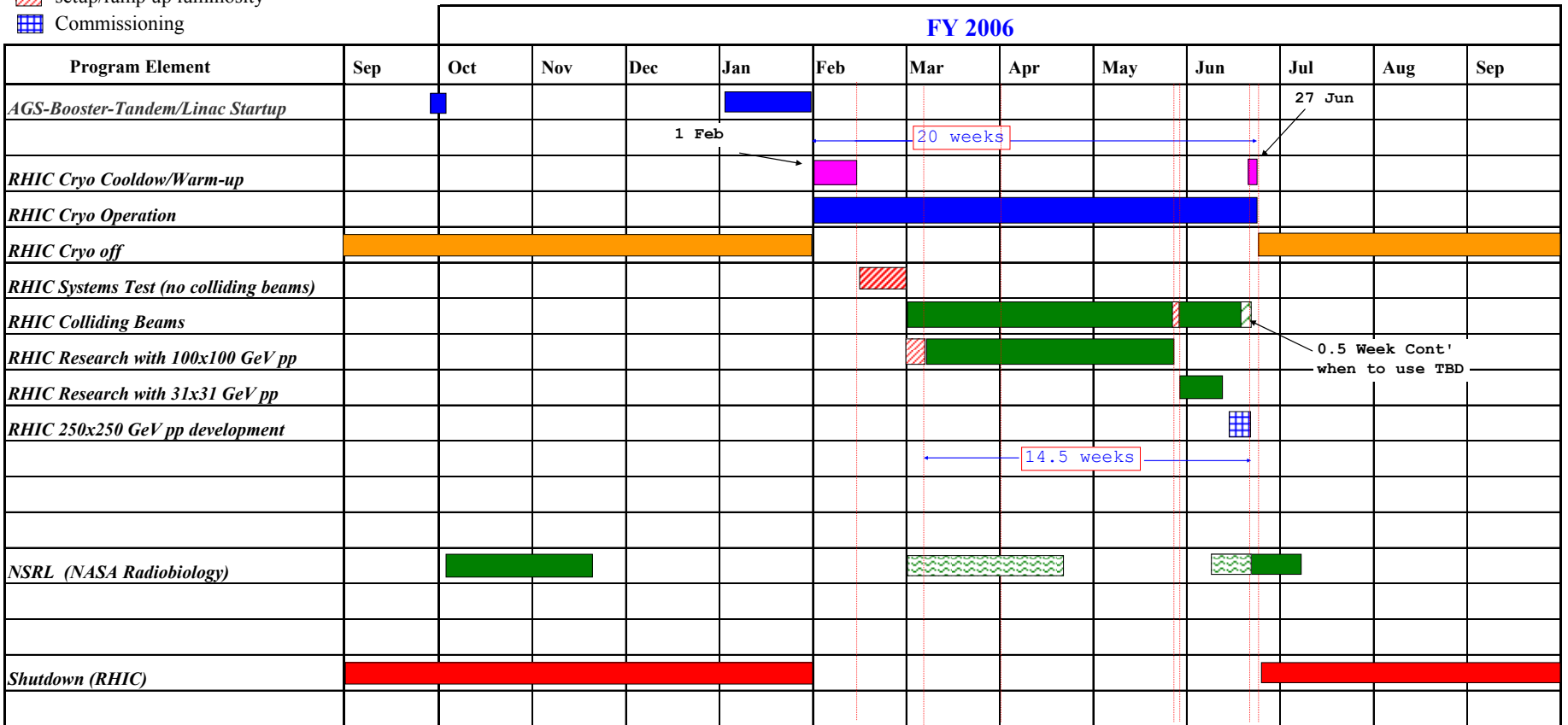
Archive

C-A Operations-FY06

13 Jan 06

DRAFT Plan

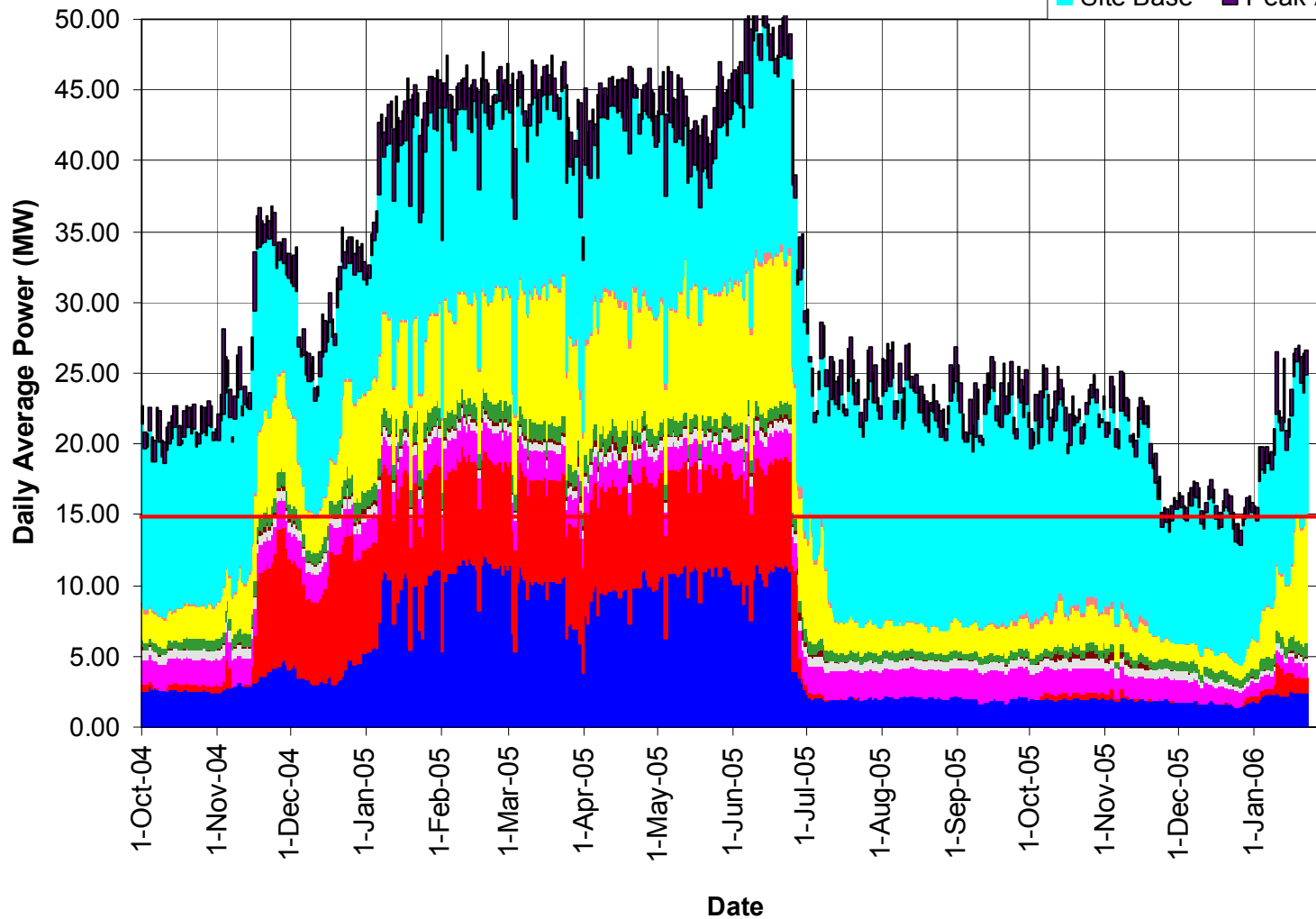
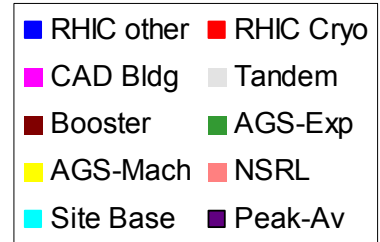
-  Contingency
-  schedule to be determined
-  setup/ramp up luminosity
-  Commissioning



As of 22 Jan 06

BNL Energy Use FY 2005-6

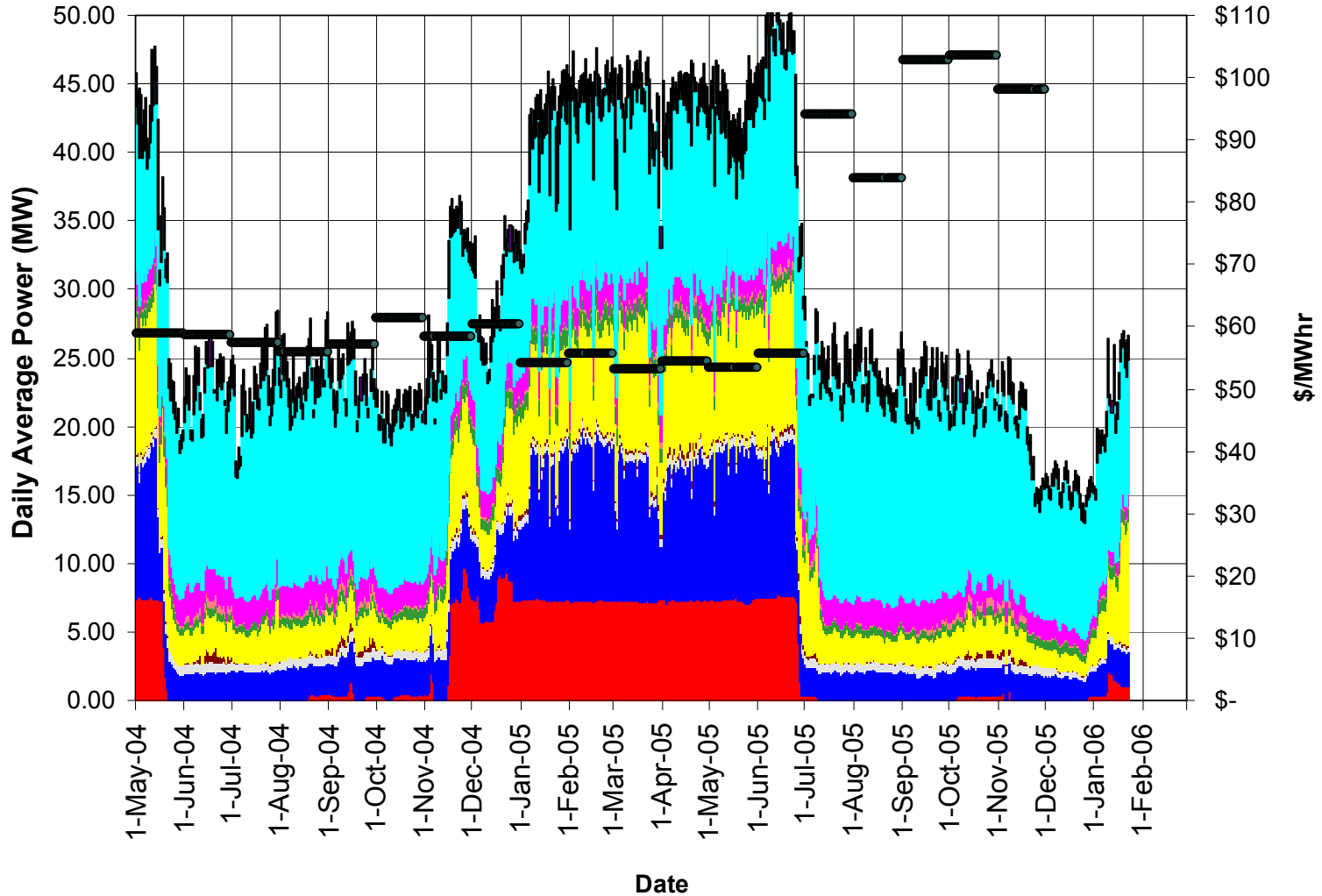
(C-AD Bldg 911 power is in AGS-Exp/Mach)



As of 22 Jan 06

BNL Energy Use FY 2005

(C-AD Bldg 911 power is in AGS-Exp/Mach)



RHIC Machine/Detector Planning Meeting

Run 5 (p⁺p⁺) -- Integrated Luminosity by week (lumi-on to lumi-off)

