

Run 13 RHIC Machine/Experiments Meeting

19 Feb 2013

Agenda:

- Status reports

Run 13 plan based on 20 weeks cryo operation

and Fischer et.al. RHIC Collider Projections (FY 2013 – FY 2017), 27 Sep 2012

- ✓ 11 Feb, Begin cool-down to 4.5K
- ✓ 15 Feb, Cool-down to 4.5K in Blue and Yellow Ring complete, begin magnet setup

today, 19 Feb...

- 15 Feb -1 Mar, RHIC $\sqrt{s} = 510$ GeV pp machine setup
- 1-8 Mar, machine ramp-up with 8 hr/night for experiment setup
- 8 Mar, begin $\sqrt{s} = 510$ GeV pp physics run
- 6 Jun, switch to $\sqrt{s} = 15$ GeV/n AuAu if pp goals are met and end 12.9 week $\sqrt{s} = 510$ GeV pp physics run
- 27 Jun, end ~ 2.5 week $\sqrt{s} = 15$ GeV/n AuAu physics run or 15.9 week $\sqrt{s} = 510$ GeV pp physics run, begin cryo warm-up
- 30 June, cryo warm-up \sim complete (19.9 cryo-weeks)

See <http://www.rhichome.bnl.gov/AP/Spin2013/> for the Run Coordinator's detailed plan

PHENIX Goal, 250 pb⁻¹ recorded, 750 pb⁻¹ delivered, ≥ 55% polarization
STAR Goal, 165 pb⁻¹ recorded, 275 pb⁻¹ delivered, ≥ 55% polarization

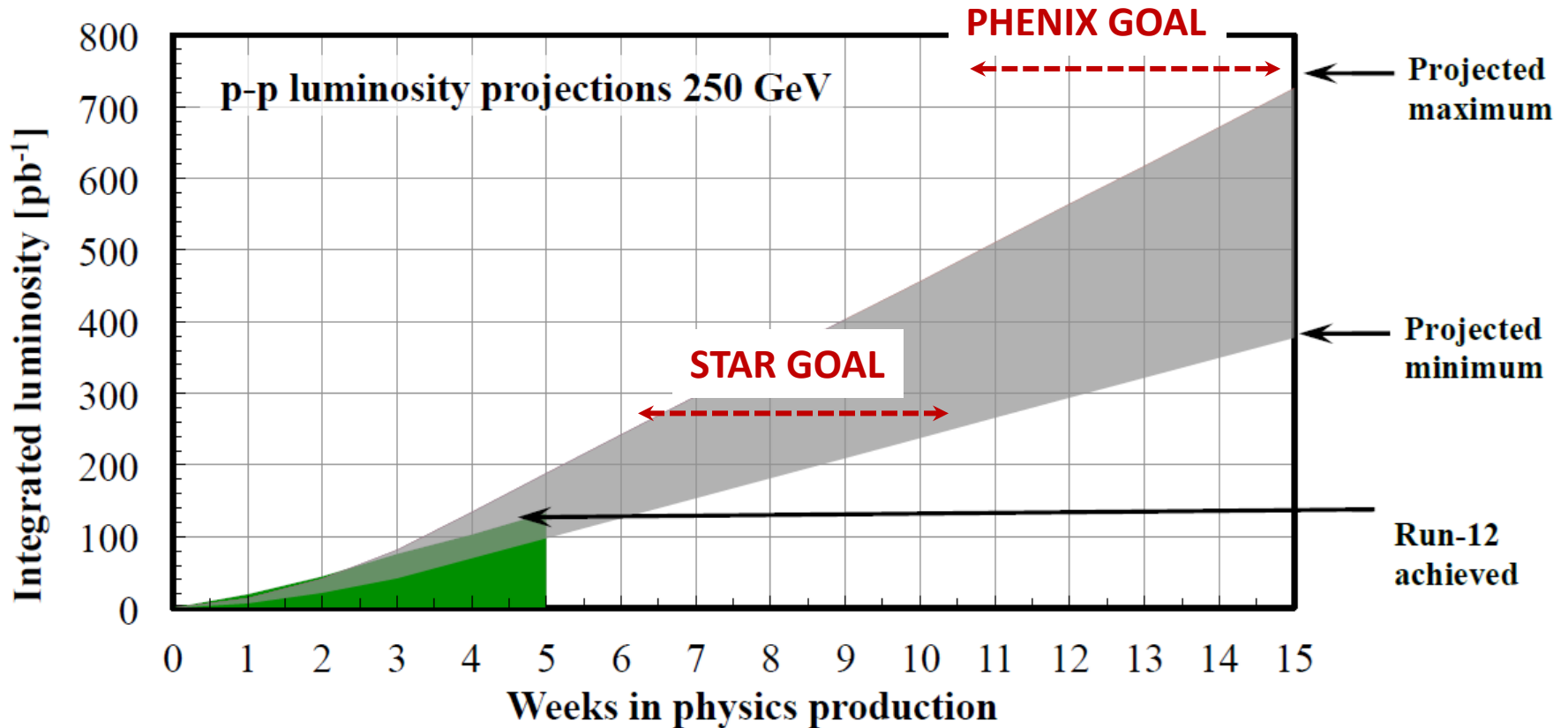


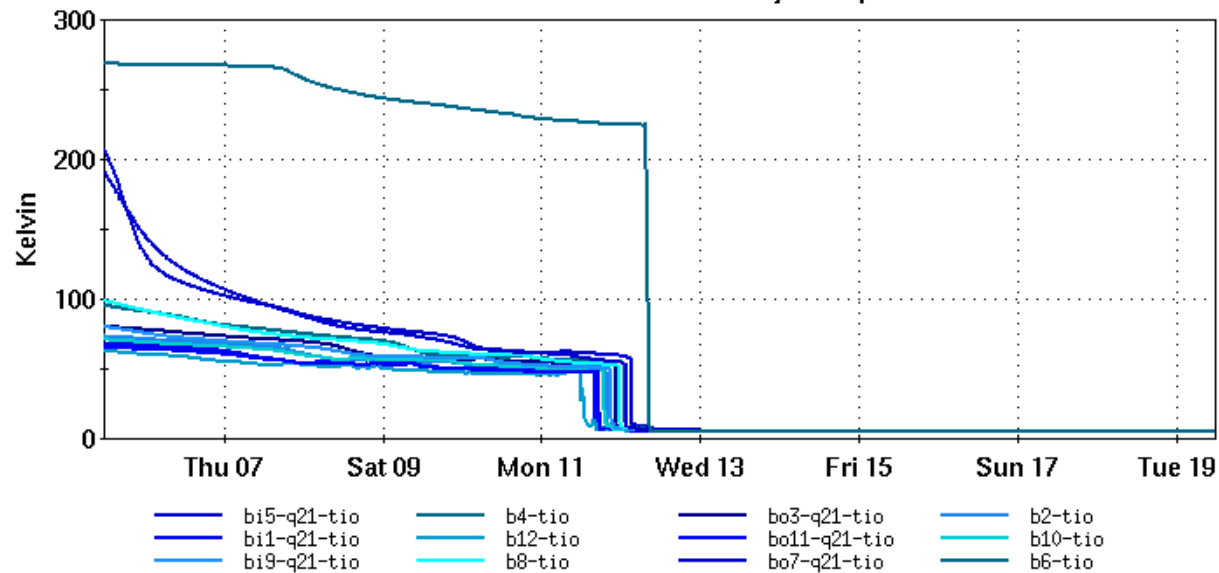
Figure 3: Projected minimum and maximum integrated luminosities for polarized proton collisions at 255 GeV beam energy, assuming linear weekly luminosity ramp-up in 4 weeks. An average store polarization between up to 57% is expected.

Cryogenic Blue & Yellow Rings (14 days)

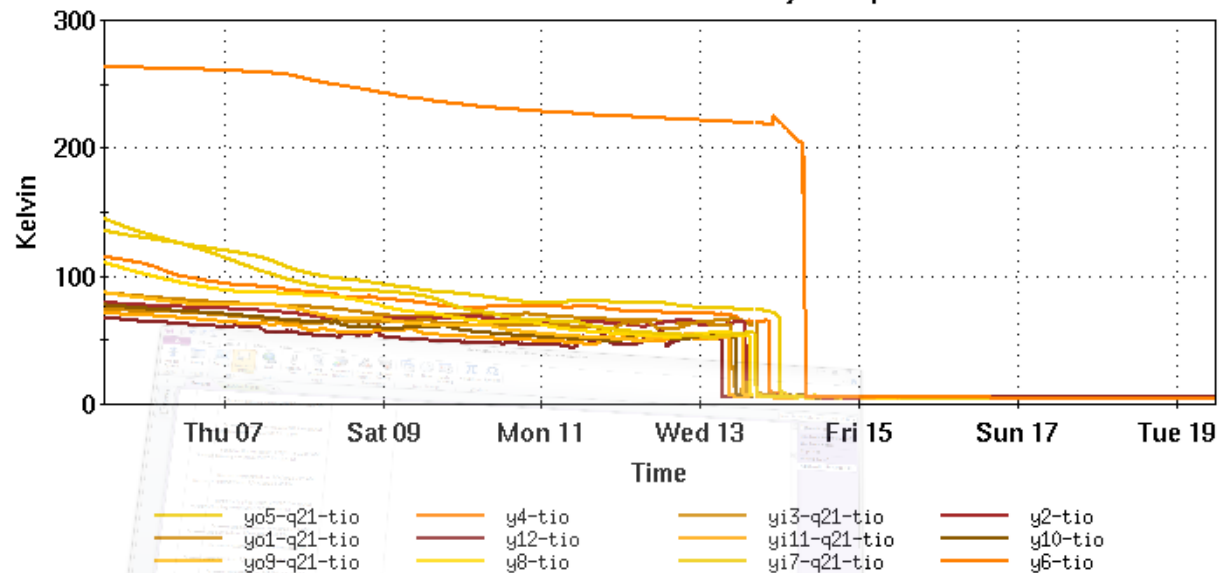
[Ring Summary \(1 day\)](#) [Sector Plots \(1 day\)](#) [Sector Plots \(14 days\)](#)

File Window Markers Analysis

Blue Cryo Temperatures



Yellow Cryo Temperatures

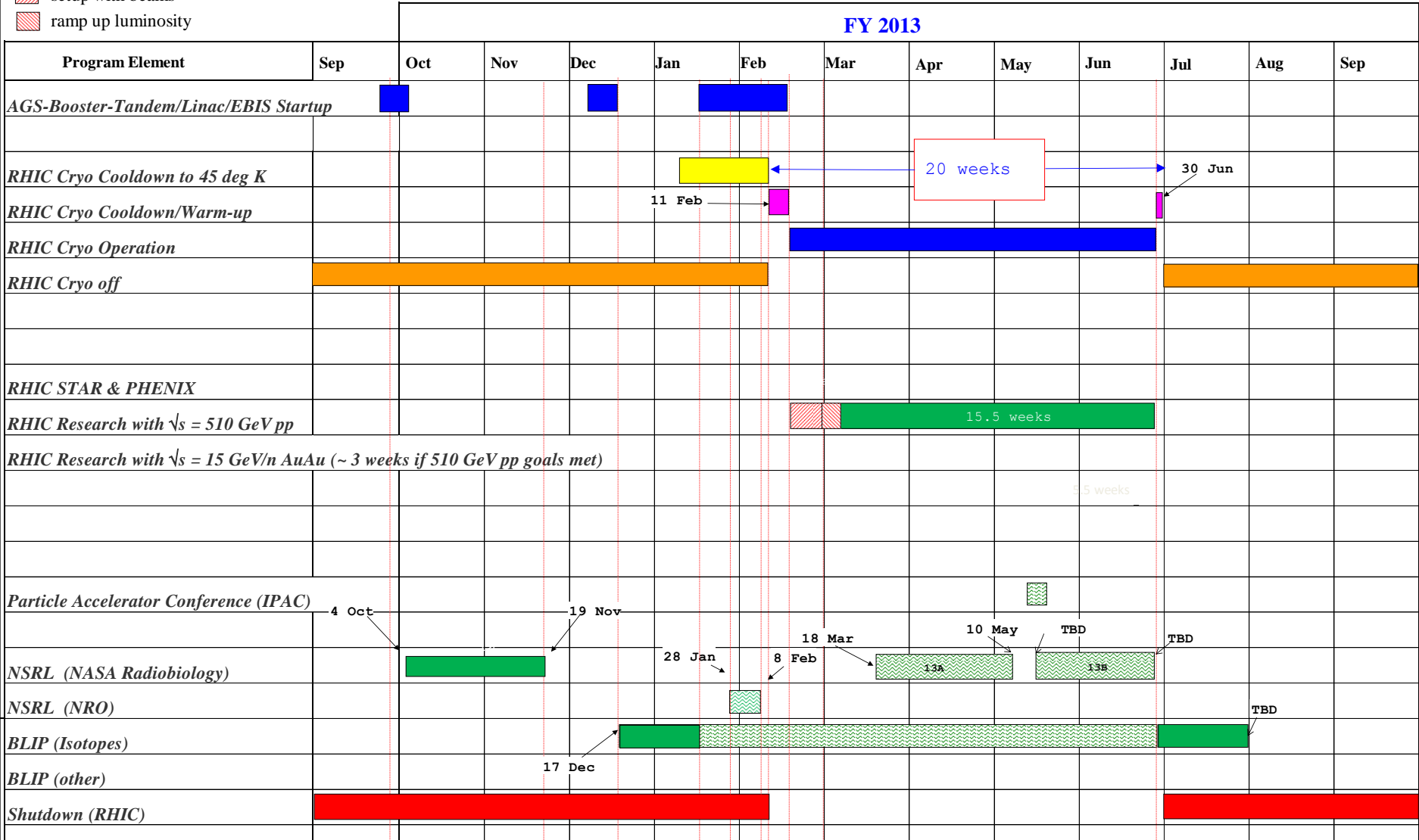


Additional Information

C-A Operations-FY13

planned, budget permitting, Preliminary

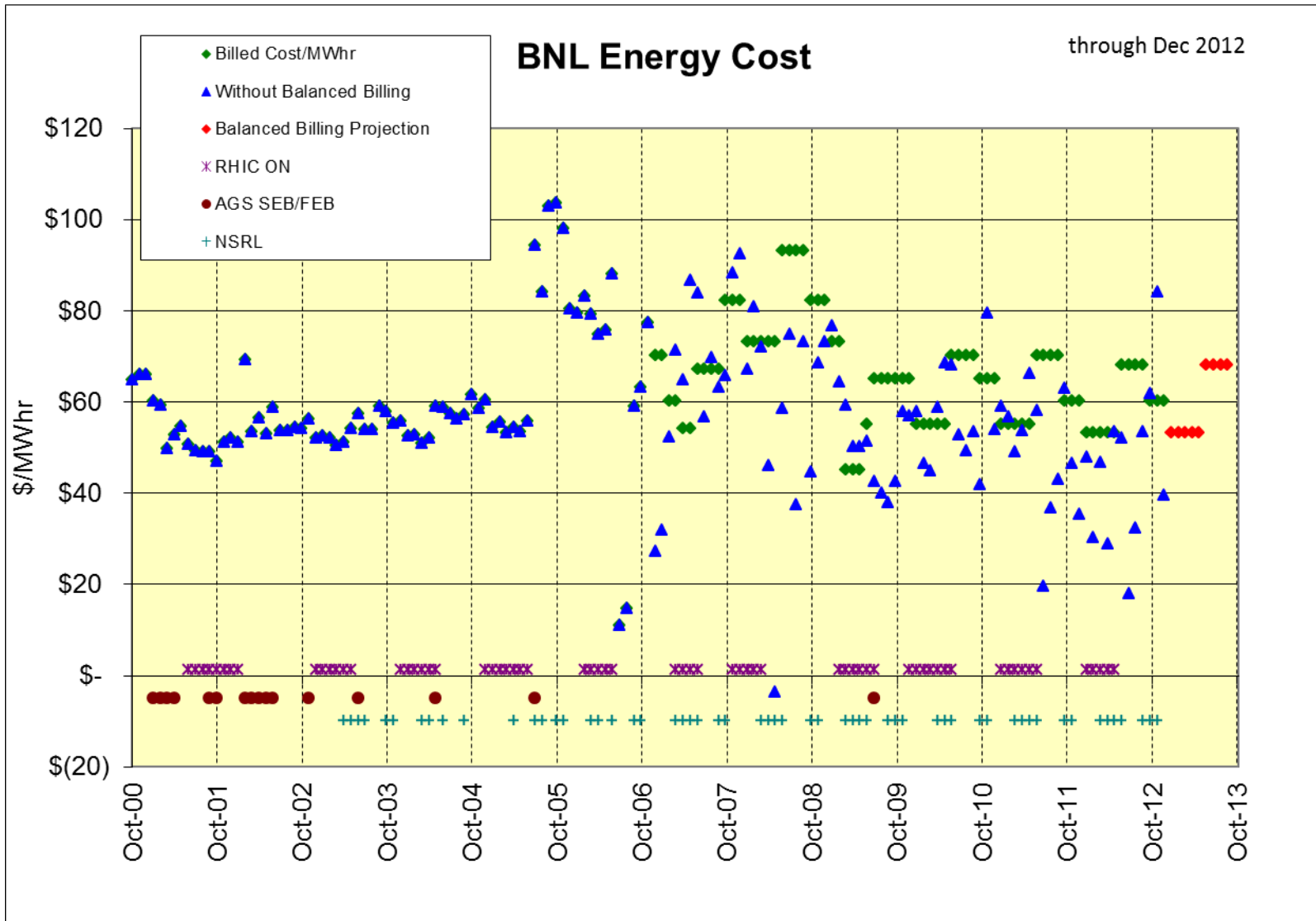
- concurrent with RHIC
- setup with beams
- ramp up luminosity



For Run 13 the PAC recommends the following (*in order of priority*):

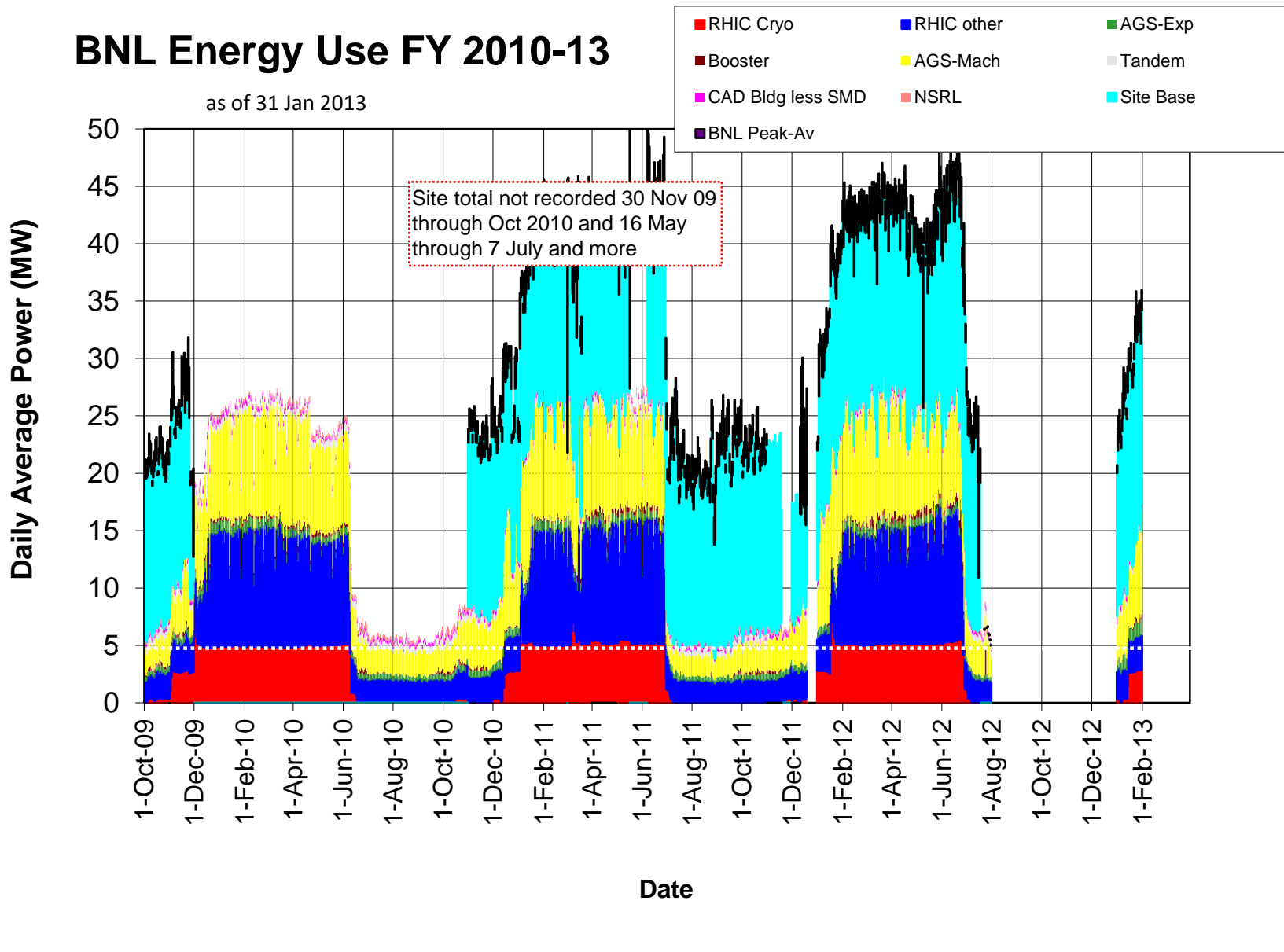
1. Running with polarized proton collisions at 500 GeV to provide an integrated luminosity of 750 pb^{-1} at an average polarization of 55%.
2. Depending on the amount of running time remaining after priority #1
 - a. If less than 3 weeks remain, a week of 200 GeV Au+Au collisions.
 - b. If at least 3 weeks of running time remain, 3 weeks of 15 GeV Au+Au collisions.
3. 8 days of 62 GeV p+p collisions.
4. At the discretion of the ALD, 4 days of low-luminosity running to accomplish the pp2pp goals.

+\$114.7K in bank through Dec 2012



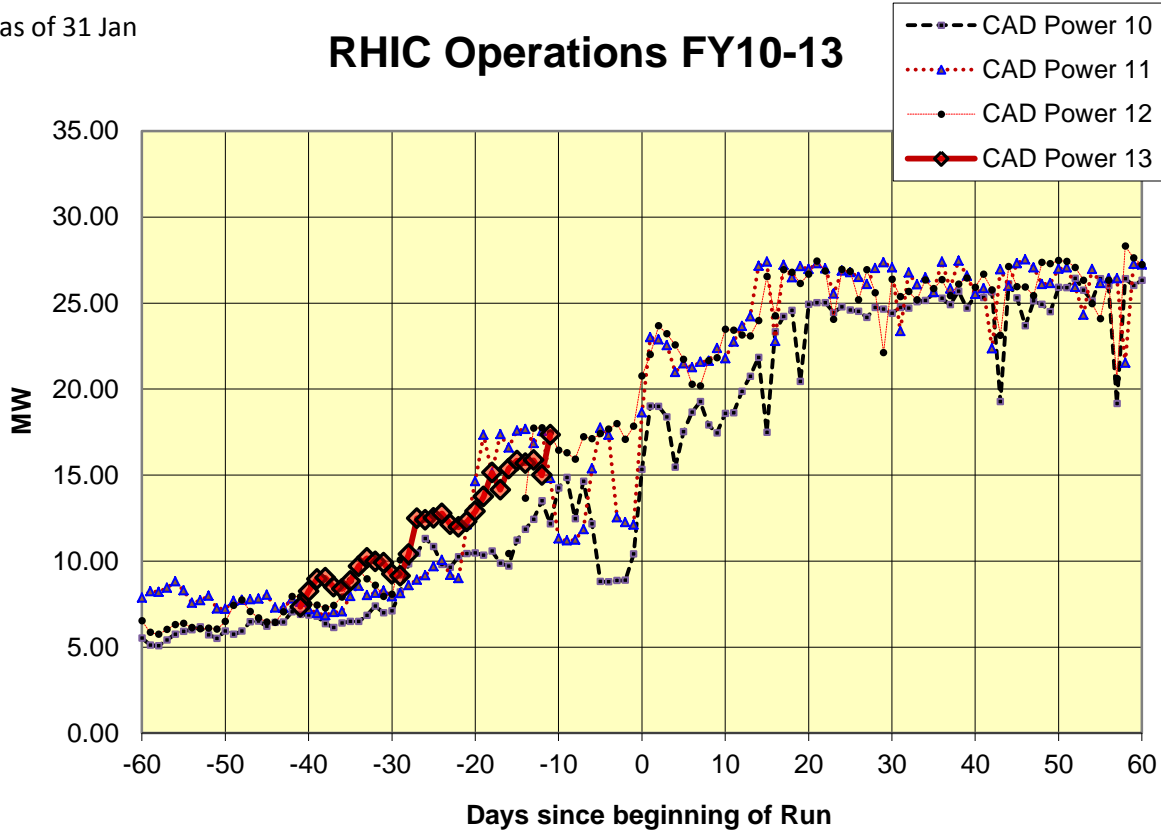
BNL Energy Use FY 2010-13

as of 31 Jan 2013



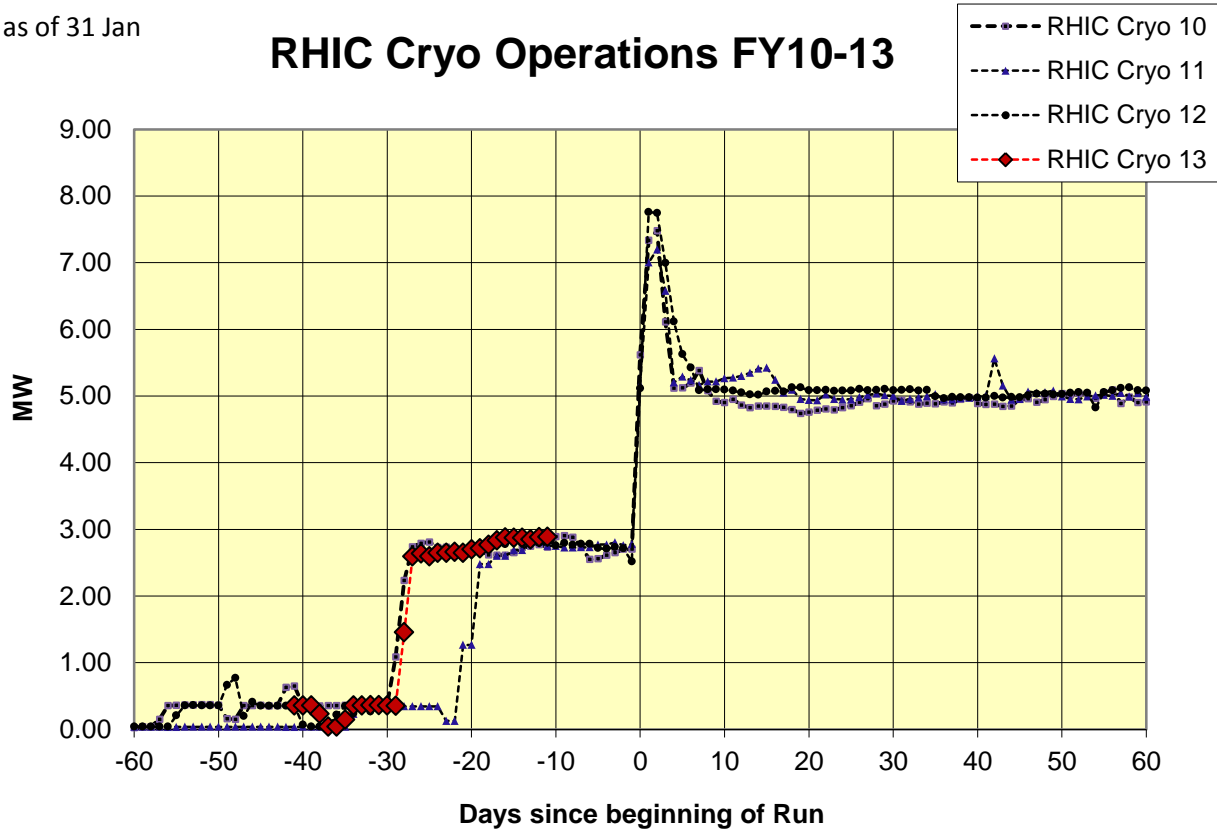
as of 31 Jan

RHIC Operations FY10-13



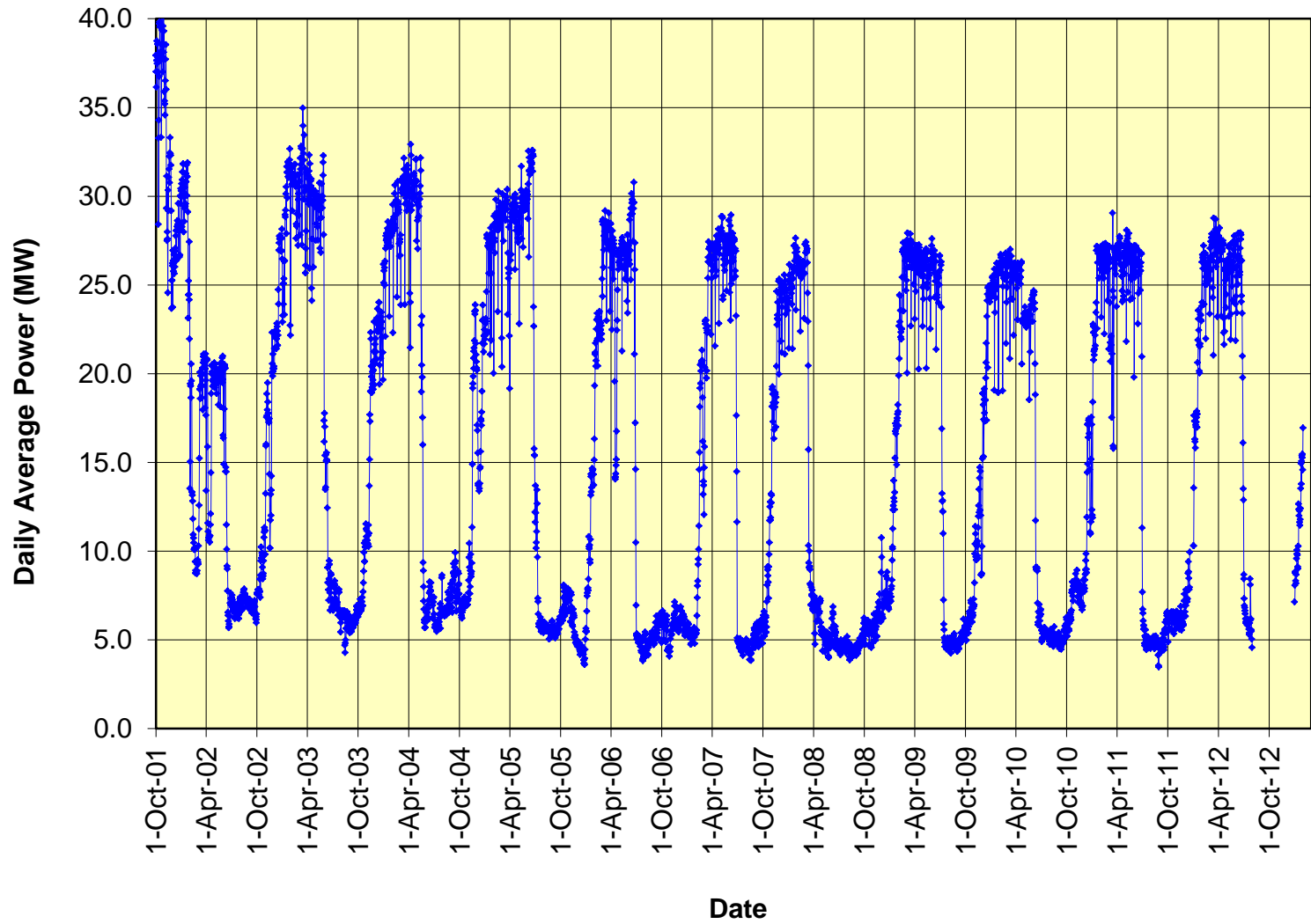
as of 31 Jan

RHIC Cryo Operations FY10-13



as of 31 Jan 2013

C-AD Energy Use FY 2002-13



BNL Electricity Cost

