

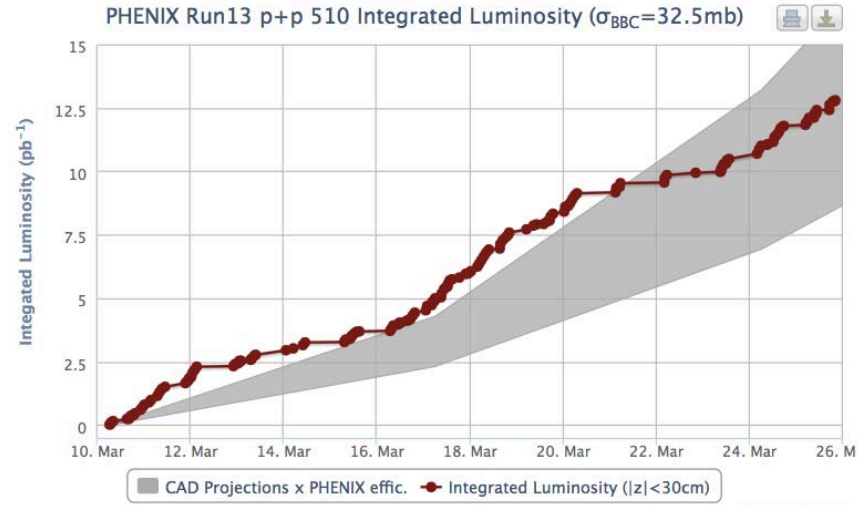


# PHENIX Run-13 status

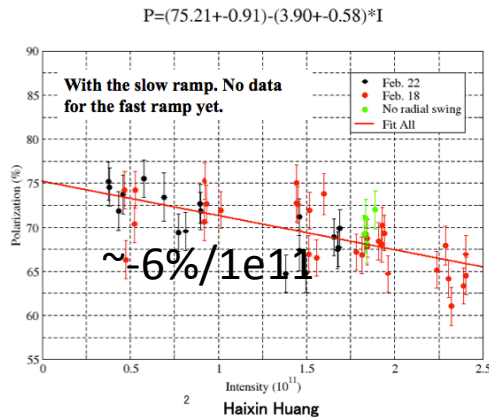
Hubert van Hecke  
for the PHENIX collaboration

# Regular runs continuing

- Data taking continues with all systems
- Slope is dominated by long down times

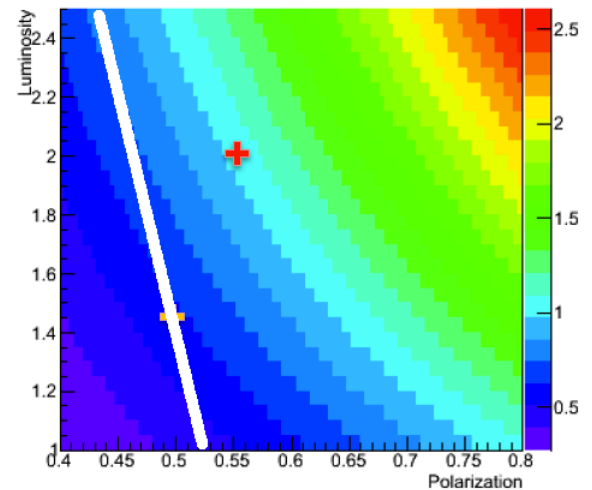


## Intensity Scan in Run 13



$$\text{FOM} \sim L * p^2$$

Figure of Merit single spin measurements

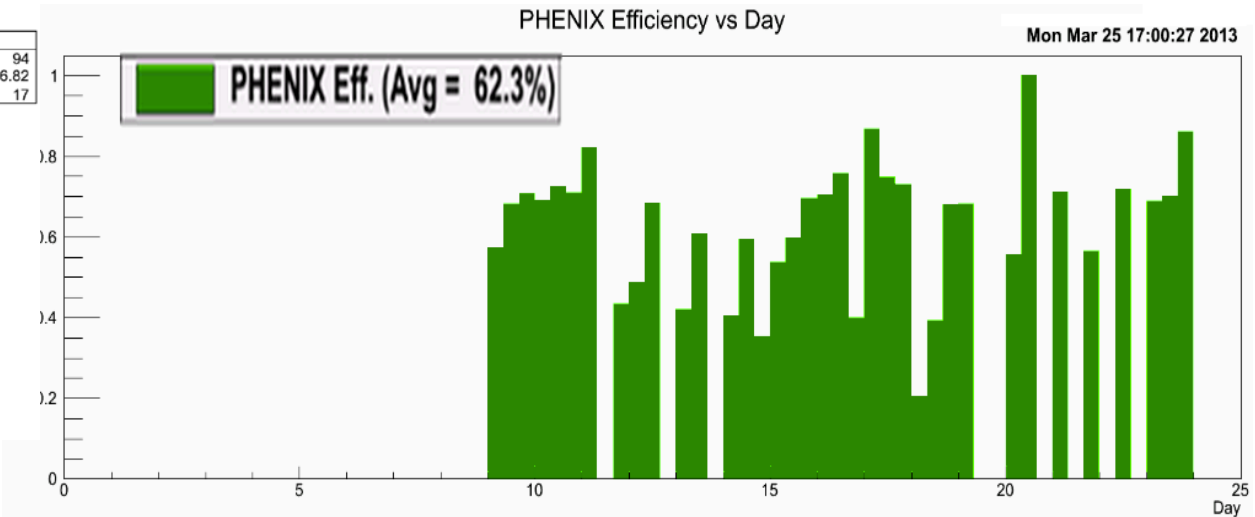
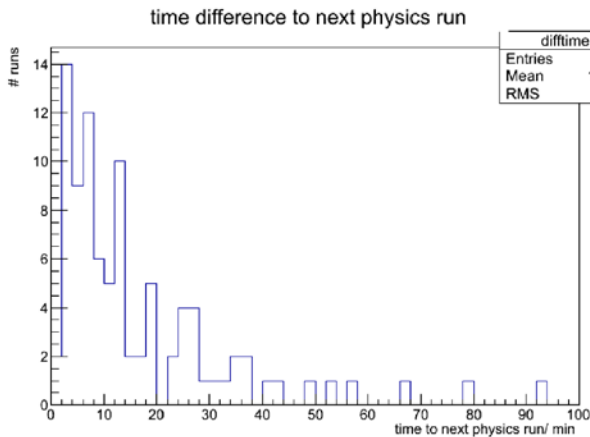
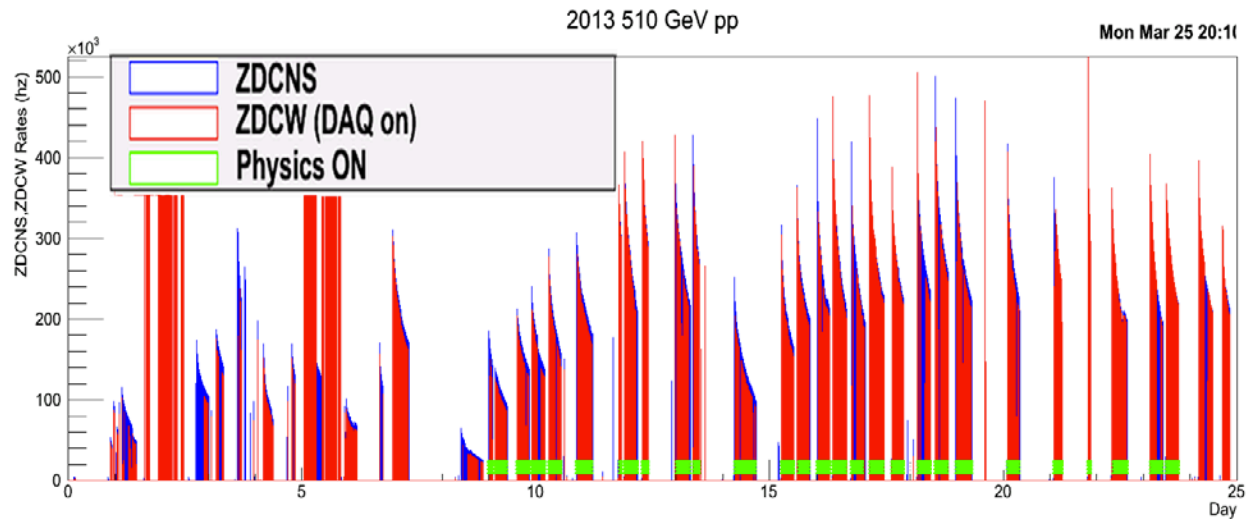


# backup

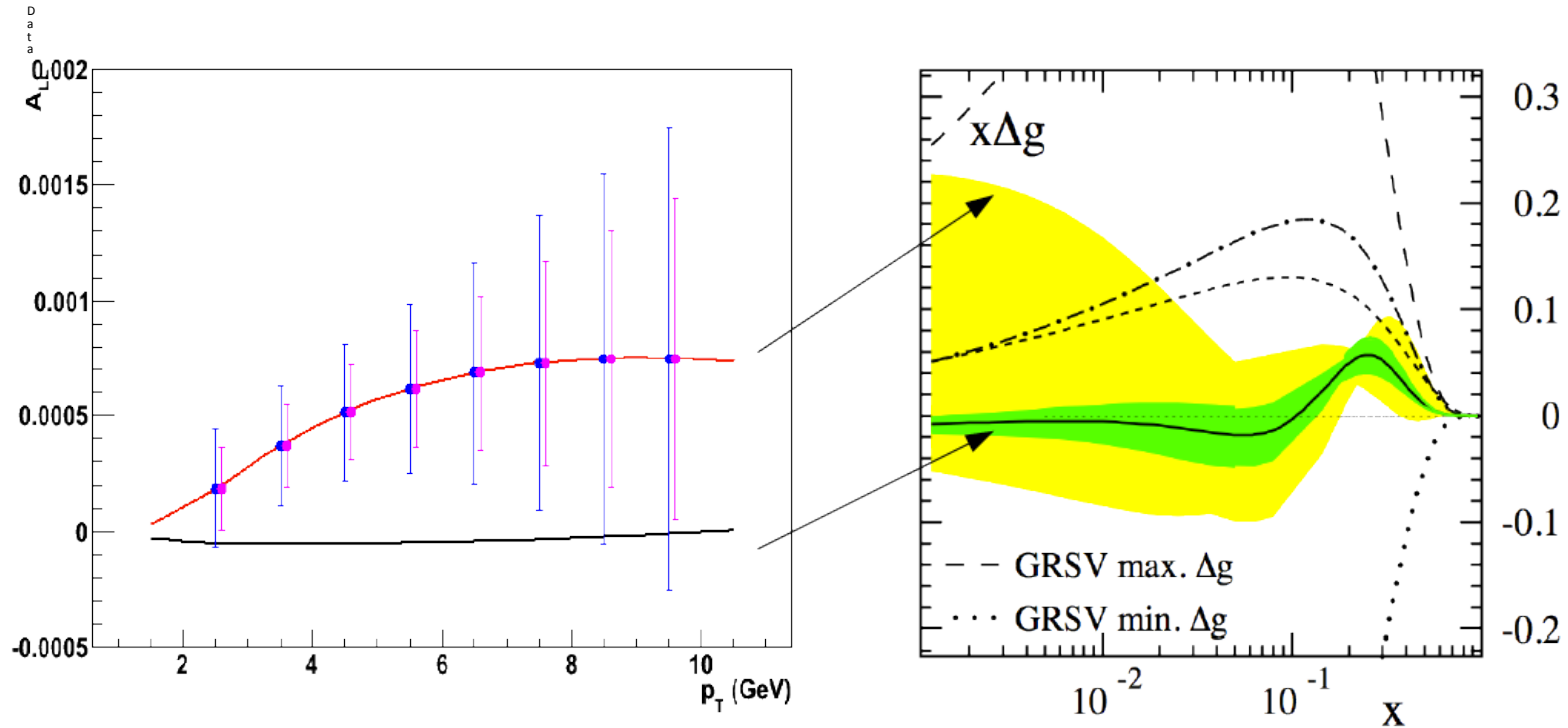


# Data taking efficiency

Studying our data taking efficiencies



# MPC ALL Projection



- Data taken from run 388793, MPC\_A trigger.
- Two curves are for DSSV (best fit) and DSSV (error band)
- Errors are projected assuming
  - 11 weeks of running, 80% RHIC uptime, 60% PHENIX uptime
  - 50% and 60% Polarization
  - Important to have high polarization and high uptime.