

# Run 14 RHIC Machine/Experiments Meeting

31 July 2014

- **Summary Slides**

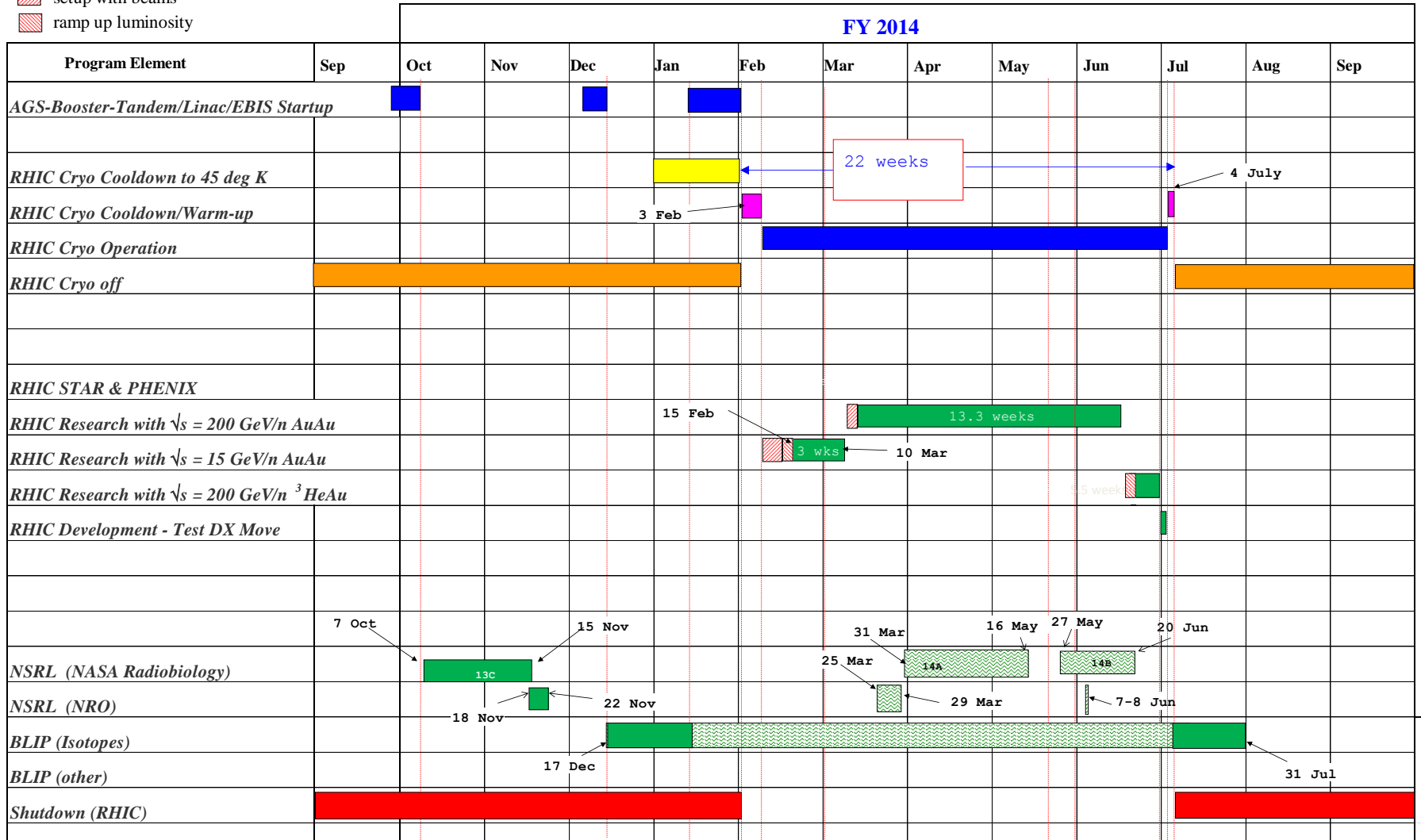
## Run 14 as run

- ✓ 3 Feb, Begin cool-down to 4.5K
- ✓ 4 Feb, Cool-down to 6K in Blue
- ✓ 7 Feb, Blue and Yellow at 4.5 deg K
- ✓ 10-Feb, Beam in Blue and Yellow at injection
- ✓ 15-Feb, Begin  $\sqrt{s} = 14.6$  GeV/n AuAu physics
- ✓ 11 Mar (Tuesday, 0800), End  $\sqrt{s} = 14.6$  GeV/n AuAu physics run begin setup for  $\sqrt{s} = 200$  GeV/n AuAu
- ✓ 15-Mar (~14:00, store 18046), Begin  $\sqrt{s} = 200$  GeV/n AuAu physics run
  - ✓ PHENIX 1<sup>st</sup> physics store = 18046 (15 March)
  - ✓ STAR 1<sup>st</sup> physics store = 18064 (17 March)
- ✓ 16-Jun (0700), end 13.3 week  $\sqrt{s} = 200$  GeV/n AuAu run
- ✓ 16-June begin setup for  $\sqrt{s} = 200$  GeV/n  $^3\text{HeAu}$  run
- ✓ 20-June first Physics Store
- ✓ 6-July (0700), end 2.3 week  $\sqrt{s} = 200$  GeV/n  $^3\text{HeAu}$  run, power supply regulator work
- ✓ 7-July, Test DX move then begin cryo warm-up
- ✓ 10-July, warm-up complete, 22.4 cryo weeks of operation

# C-A Operations-FY14

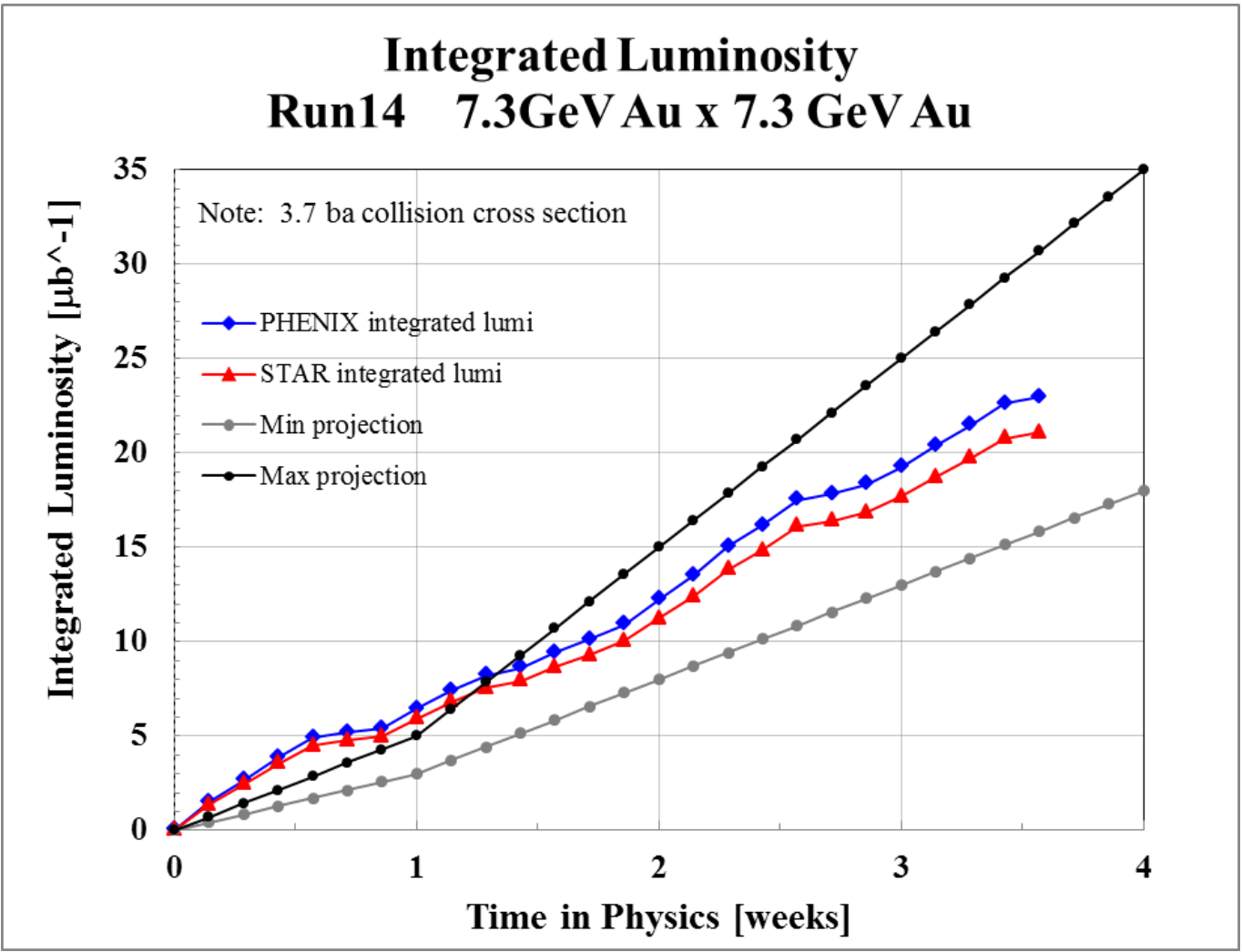
as run

- concurrent with RHIC
- setup with beams
- ramp up luminosity



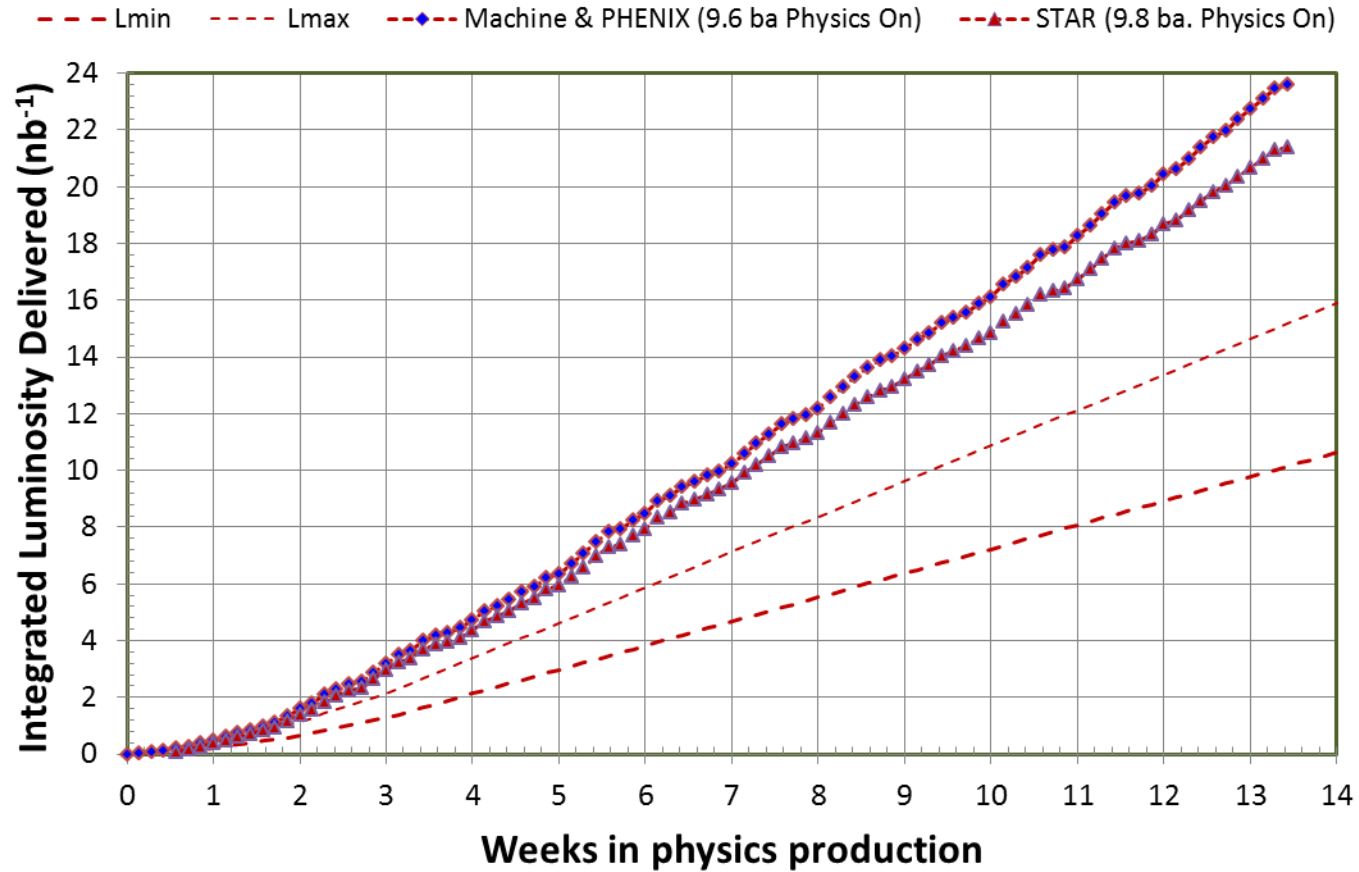
Through final fill 18010, 11 Mar 2015

max/min projections from Fischer et.al. "RHIC Collider Projections (FY2014-FY2018)", 4 June 2013

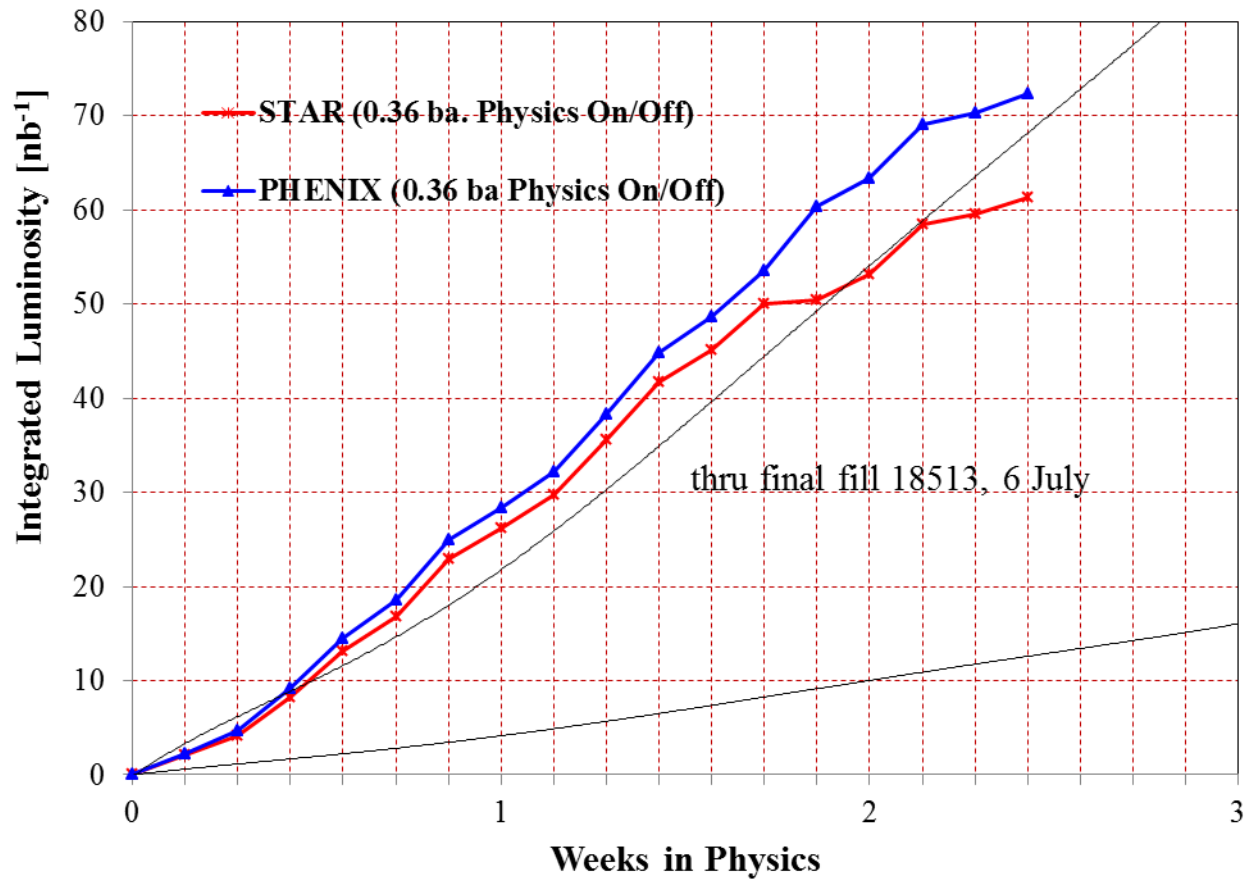


From Ingrassia,  
<http://www.cadops.bnl.gov/AGS/Operations/Run14/>

## Au-Au Lumi (100 x 100 GeV/n) - Run 14



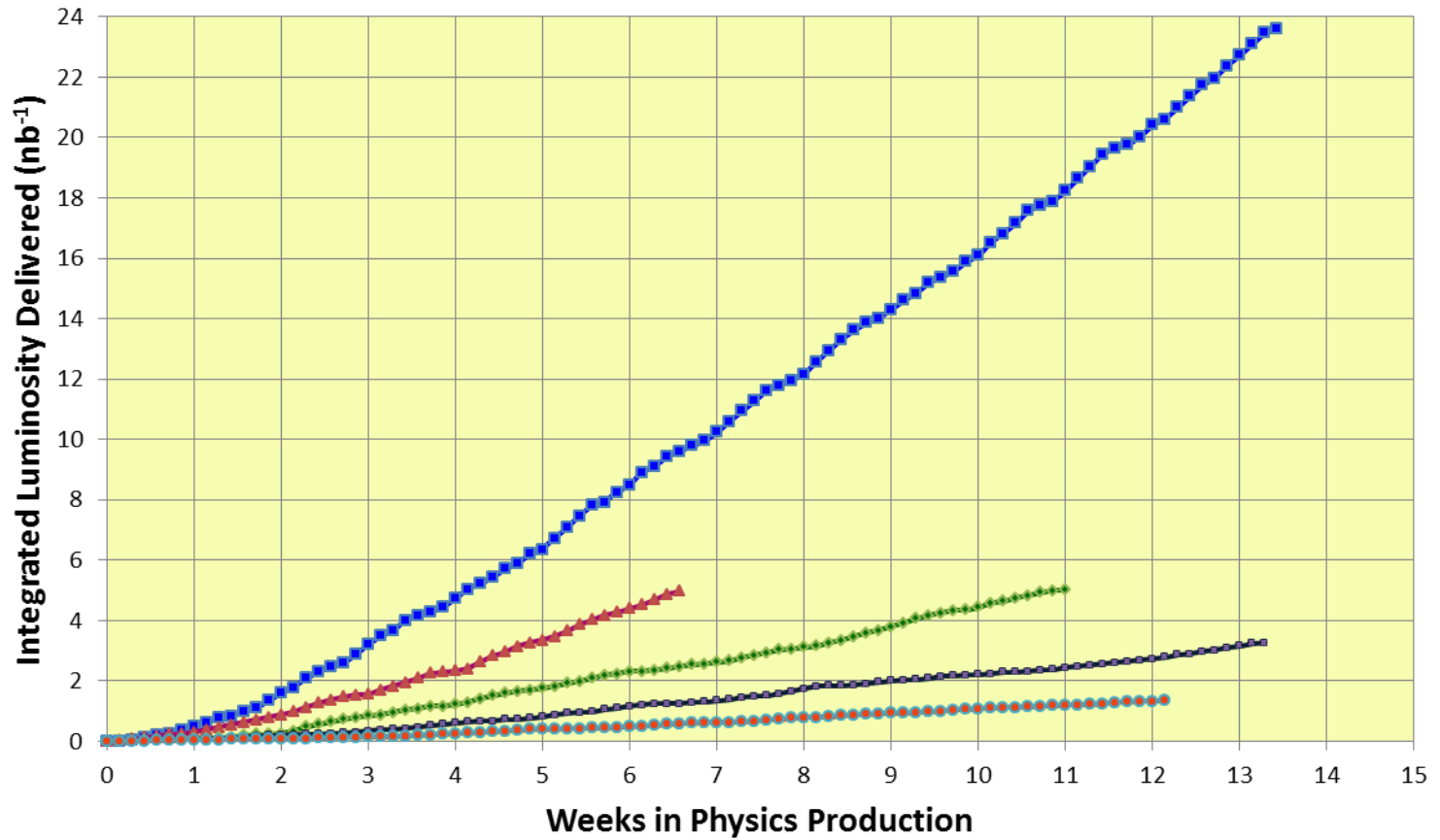
## Au-<sup>3</sup>He Lumi (100 x 100 GeV/n) - Run 14



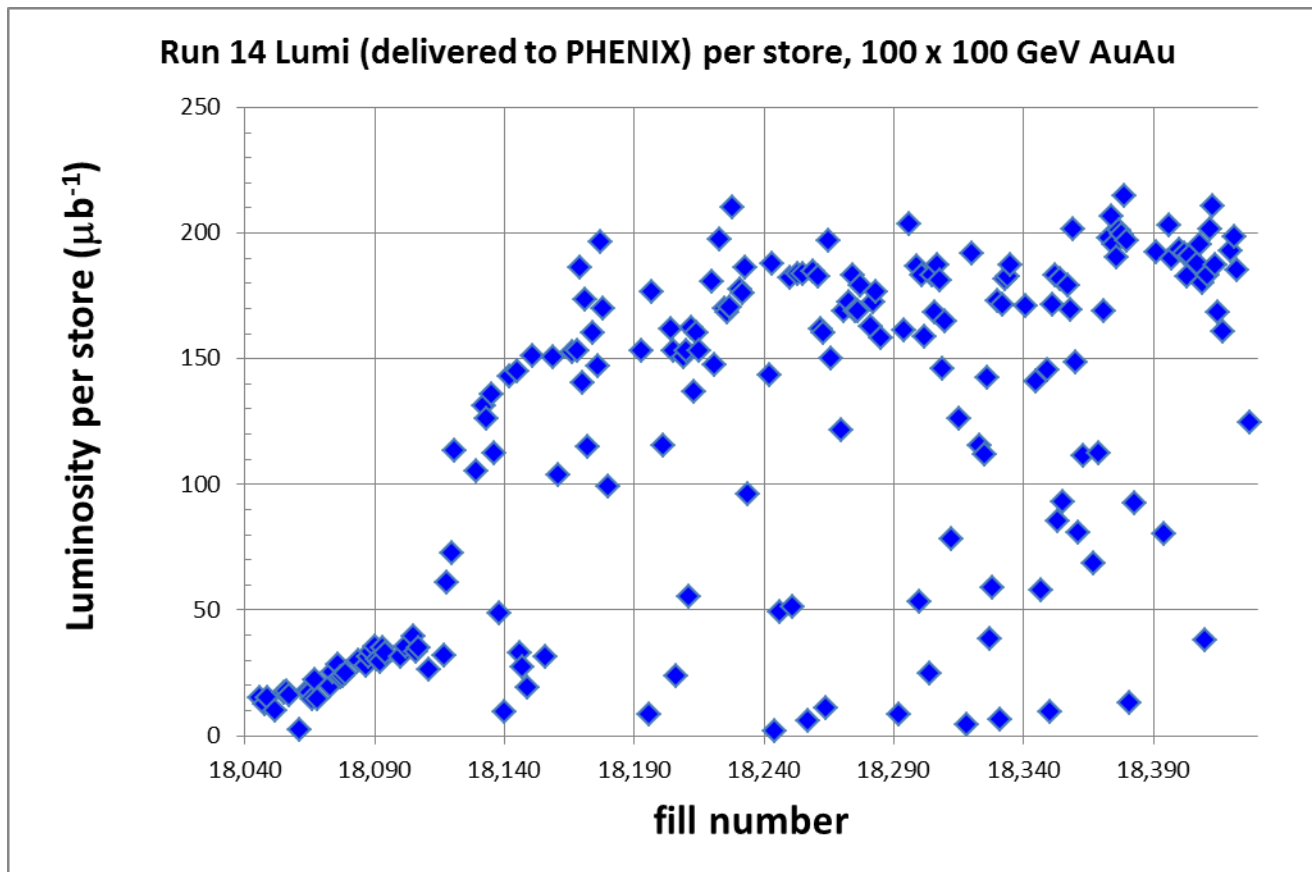
Through final store 18427, 16 June 14

### Au-Au Lumi (100 x 100 GeV/n) - Run 04-14

Run 14 Run 11 Run 10 Run 07 Run 04

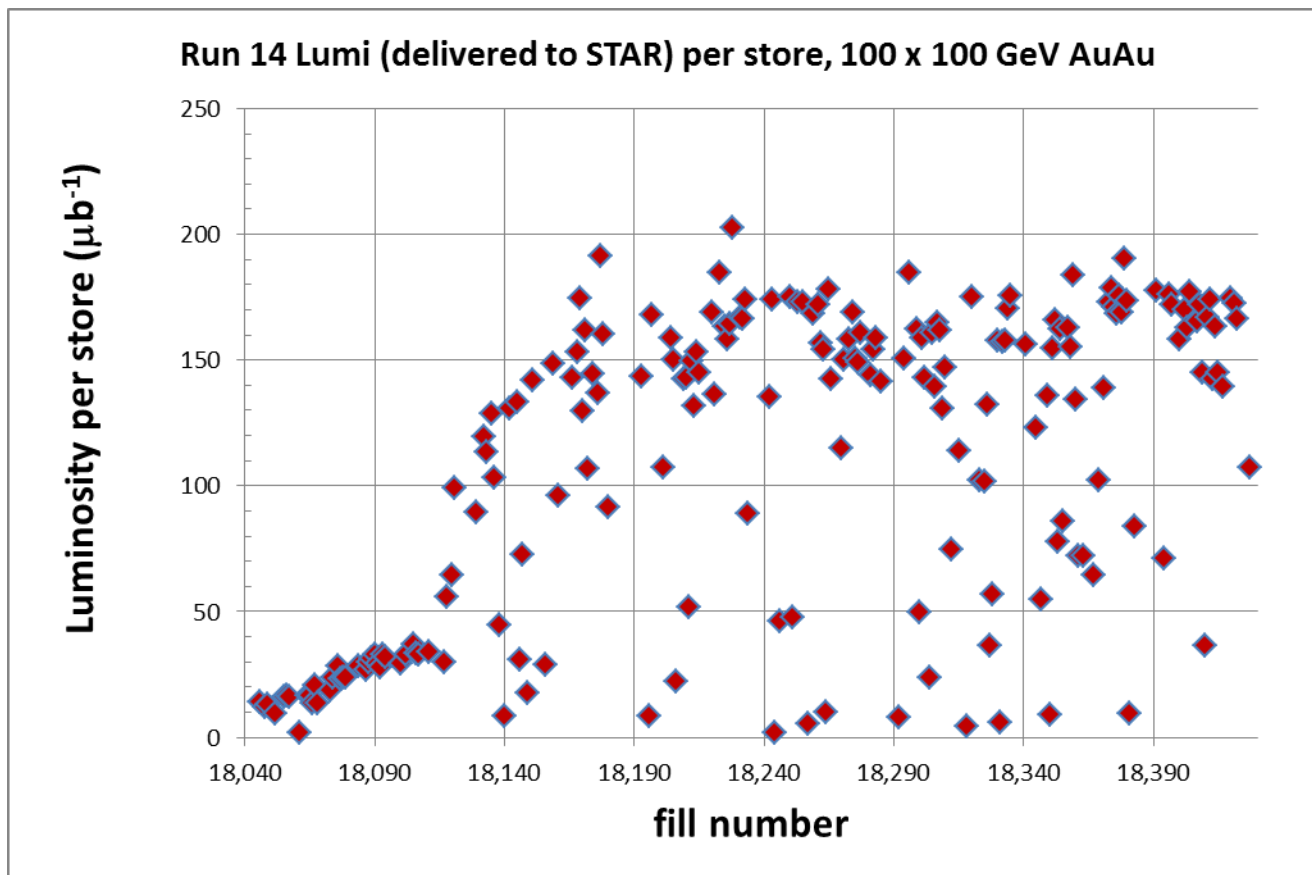


Through final store 18427, 16 June 14

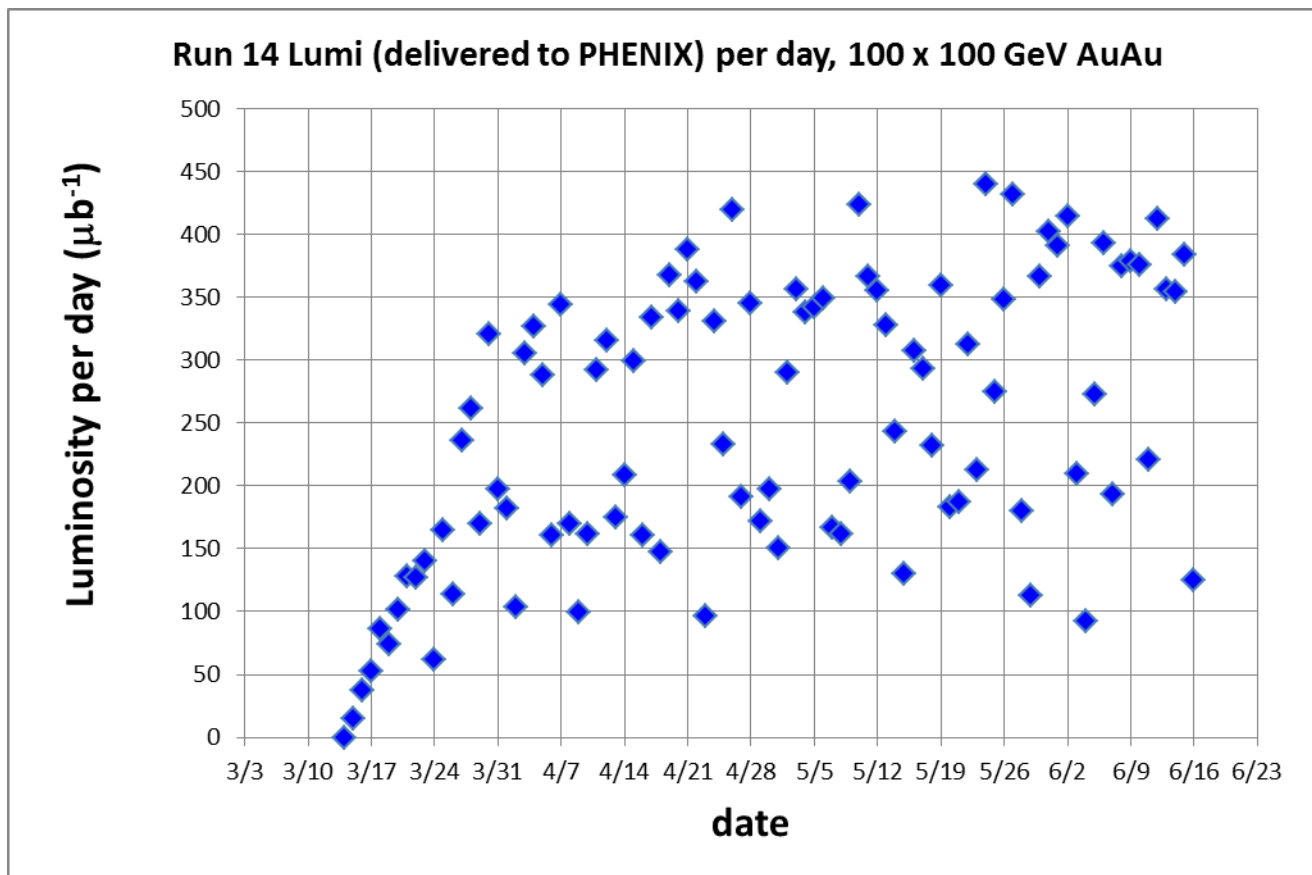




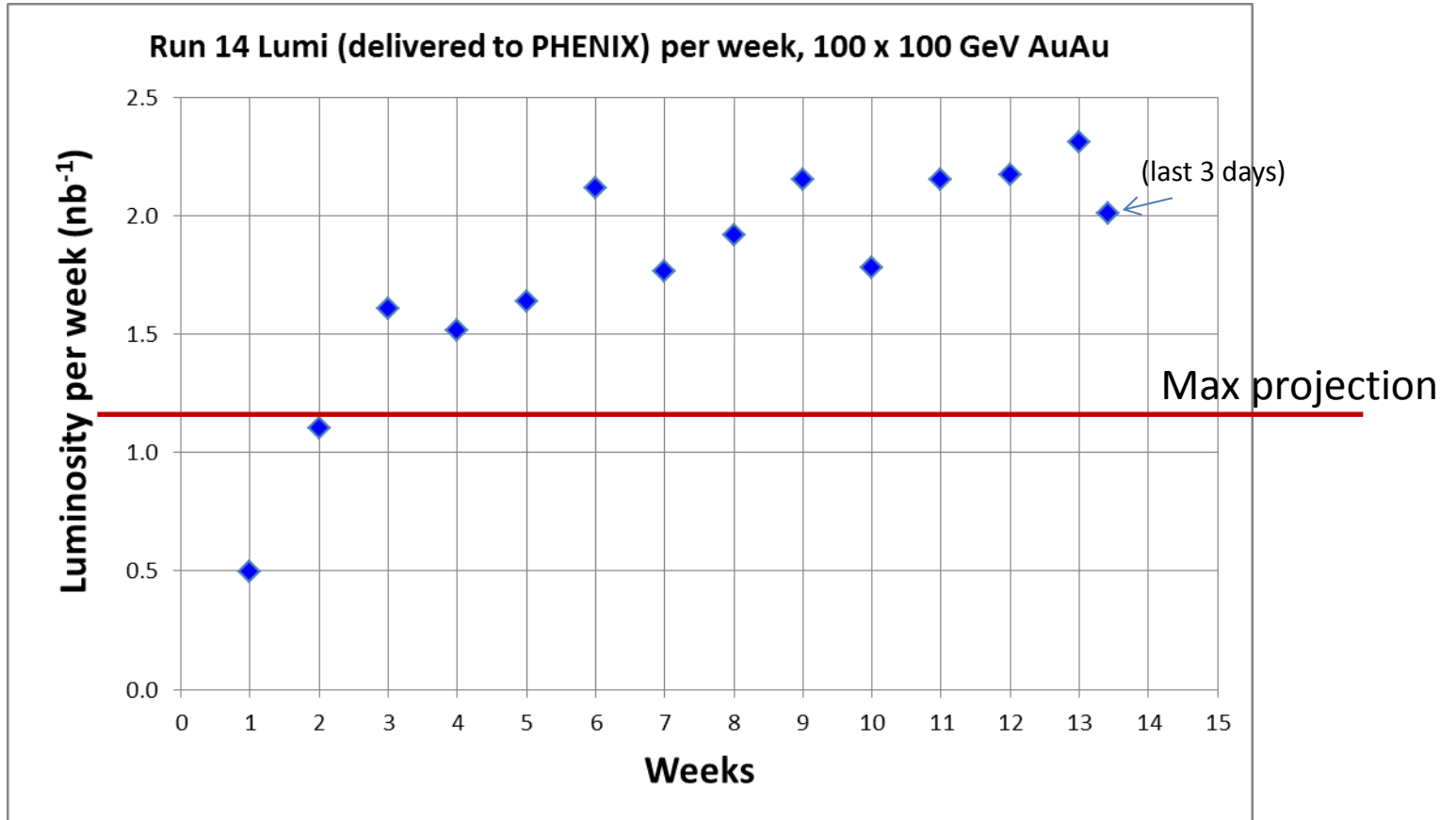
Through final store 18427, 16 June 14



Through final store 18427, 16 June 14

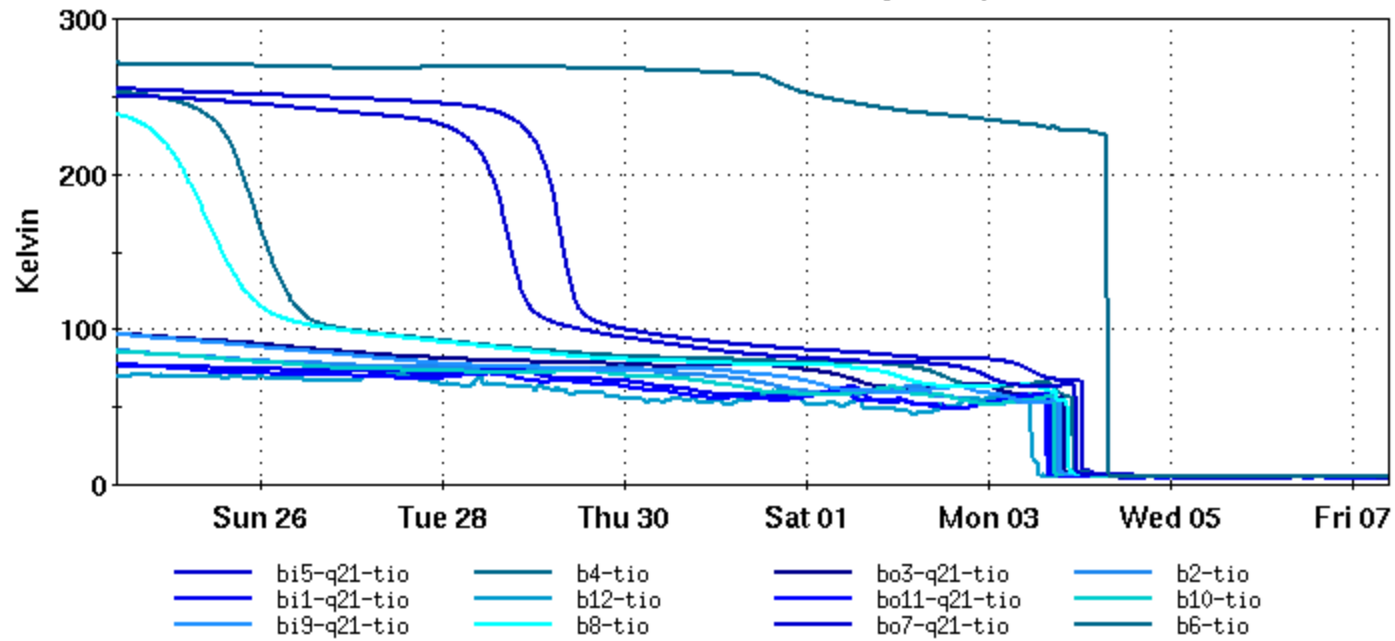


Through final store 18427, 16 June 14

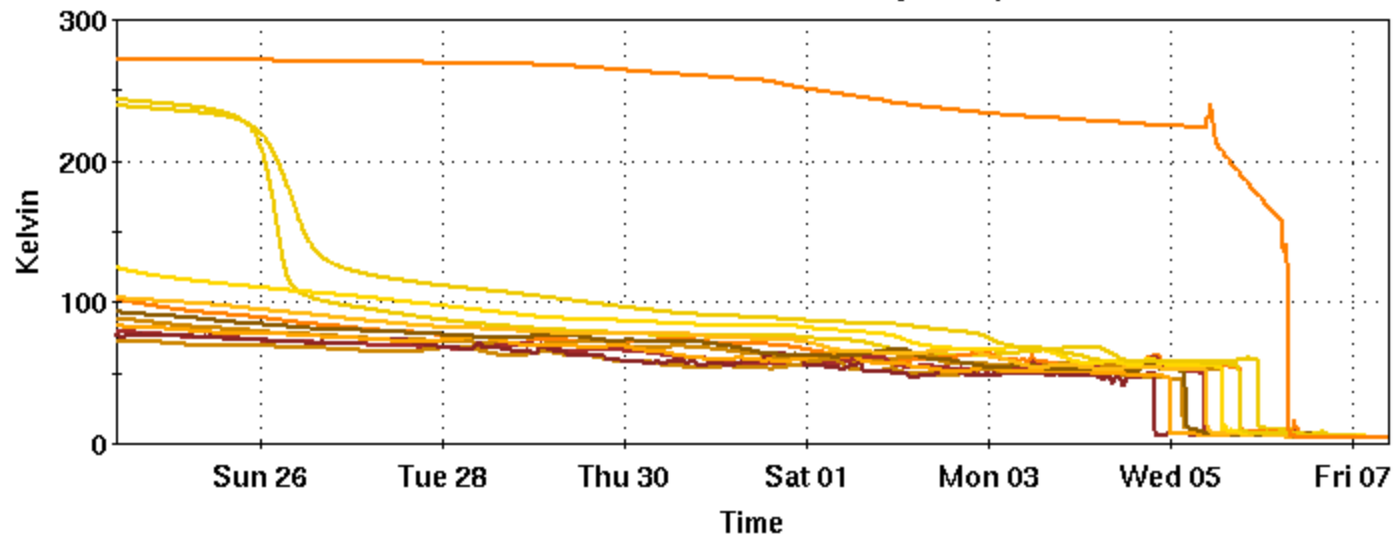


7 Feb 2014, Blue and Yellow at 4.5 deg K

Blue Cryo Temperatures



Yellow Cryo Temperatures

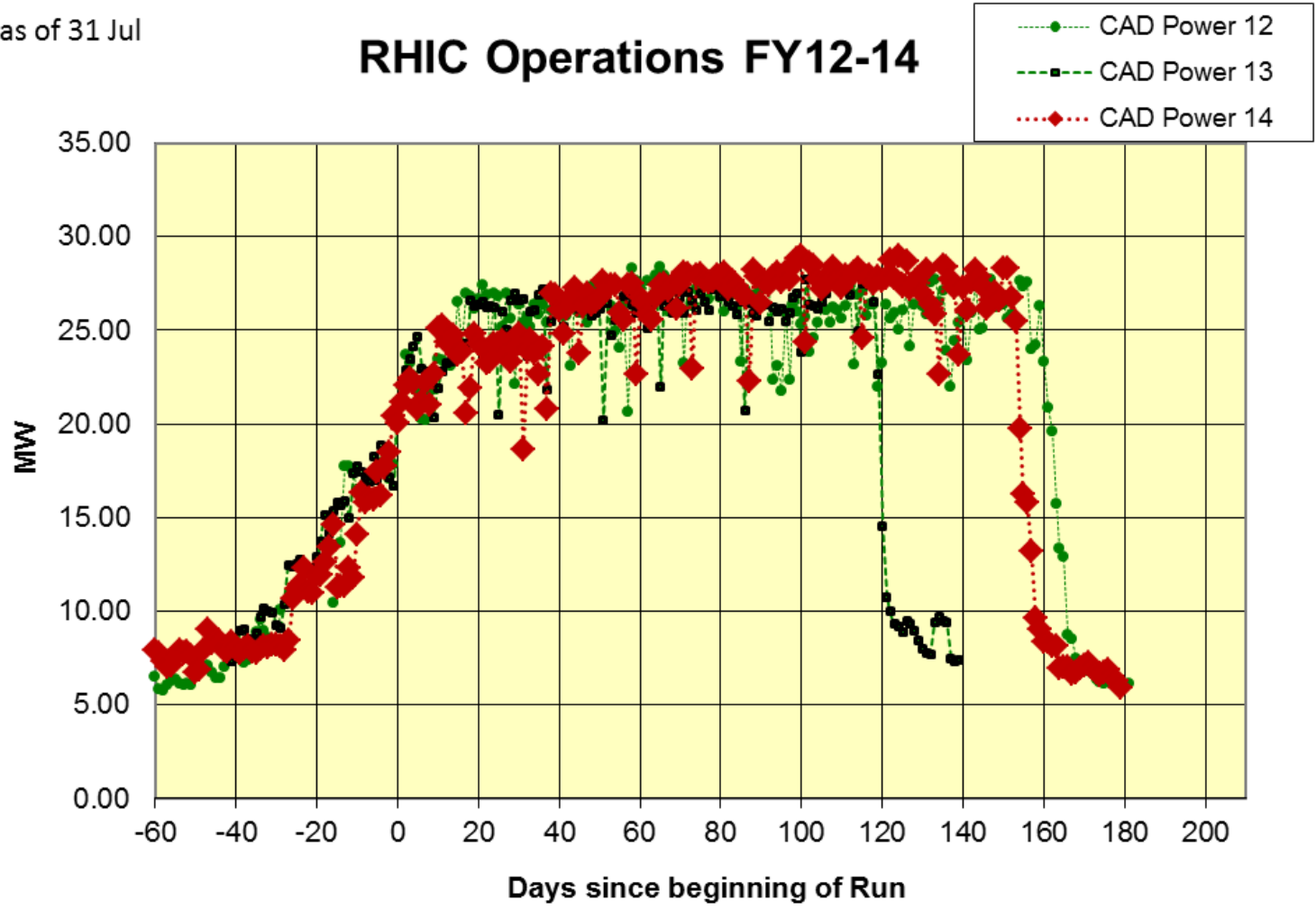


## Who's Who for 2014

<b>RHIC Au-Au Run Coordinator Operations:</b>	<a href="#"><u>Gregory Marr</u></a>	<b>gmarr@bnl.gov</b>	<b>631-344-7810 (office)</b>
	<a href="#"><u>Vincent Schoefer</u></a>	<b>schoefer@bnl.gov</b>	<b>631-344-8453 (office)</b>
	<a href="#"><u>Travis Shrey</u></a>	<b>shrey@bnl.gov</b>	<b>631-344-7451 (office)</b>
<b>RHIC 7.3 GeV Au-Au Run Coordinator planning:</b>	<a href="#"><u>Christoph Montag</u></a>	<b>montagc@bnl.gov</b>	<b>631-344-4820 (office)</b>
<b>RHIC 100 GeV Au-Au Run Coordinator planning:</b>	<a href="#"><u>Guillaume Robert-Demolaize</u></a>	<b>grd@bnl.gov</b>	<b>631-344-8215 (office)</b>
<b>Scheduling Physicist:</b>	<a href="#"><u>Chuyu Liu</u></a>	<b>cliu1@bnl.gov</b>	<b>631-344-4431 (office)</b>
<b>AGS liaison:</b>	<a href="#"><u>Haixin Huang</u></a>	<b>huanghai@bnl.gov</b>	<b>631-344-5446 (office)</b>

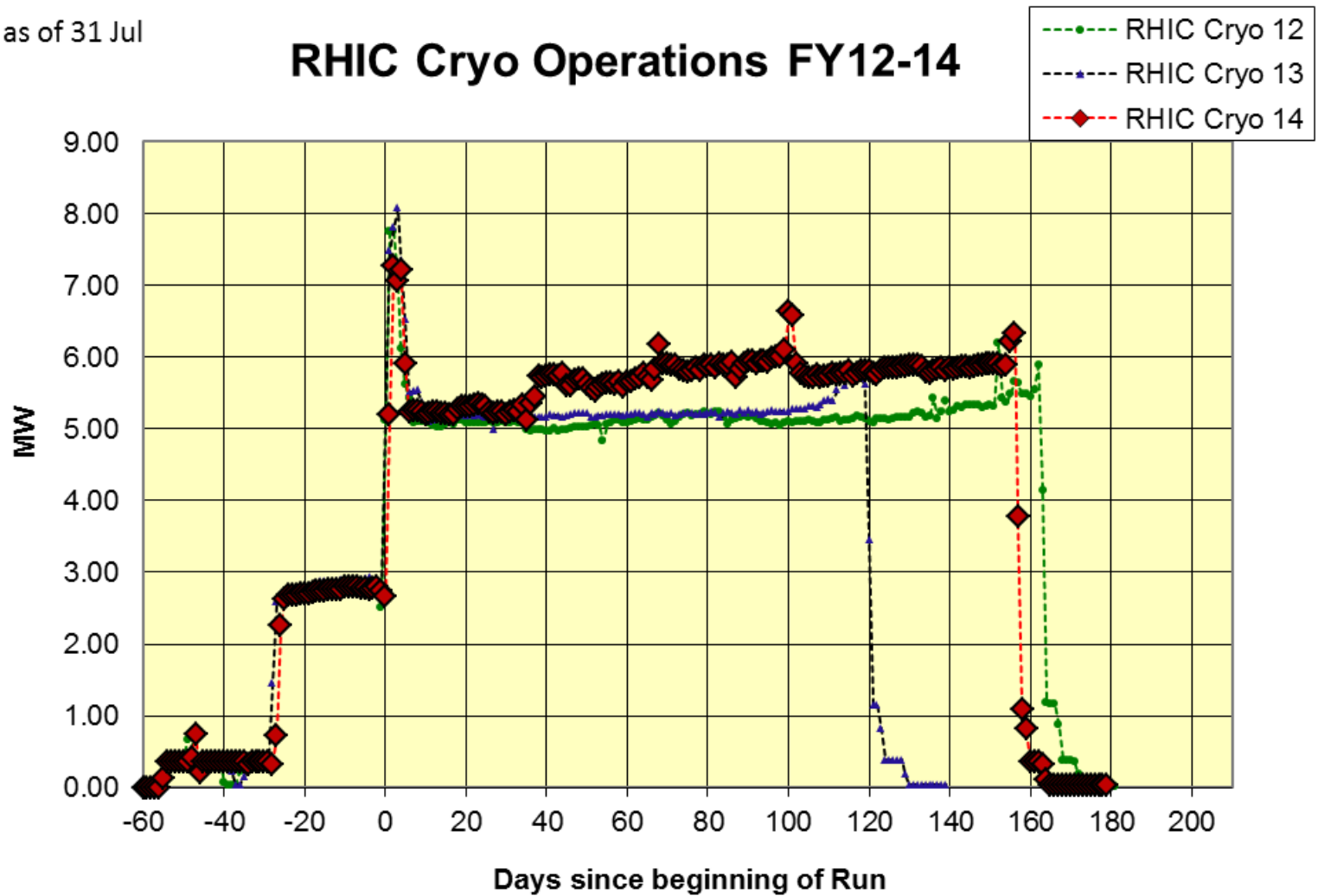
as of 31 Jul

# RHIC Operations FY12-14



as of 31 Jul

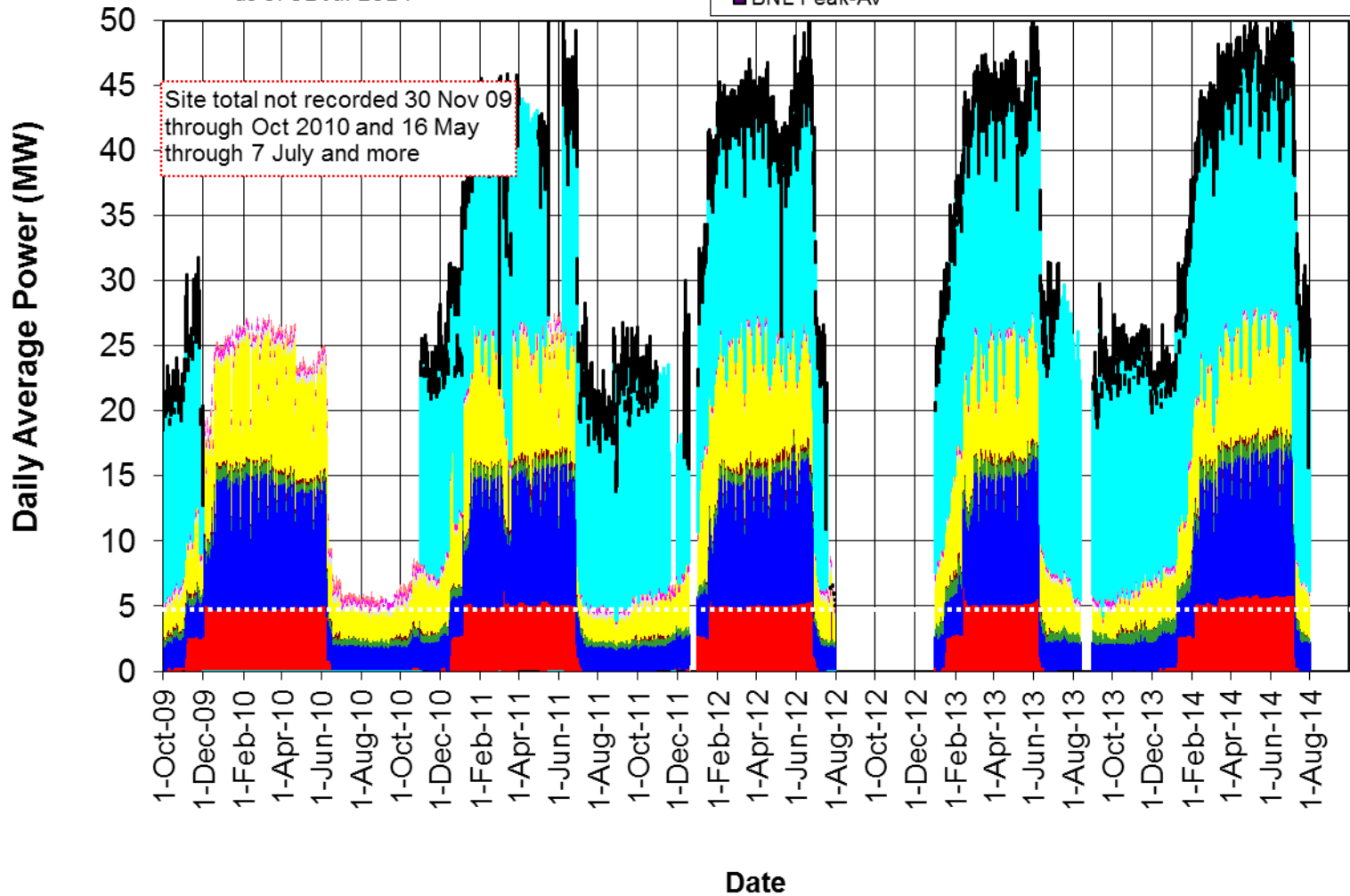
# RHIC Cryo Operations FY12-14



# BNL Energy Use FY 2010-14

as of 31 Jul 2014

- RHIC Cryo
- RHIC other
- AGS-Exp
- Booster
- AGS-Mach
- Tandem
- CAD Bldg less SMD
- NSRL
- Site Base
- BNL Peak-Av





as of 31 Jul 2014

# C-AD Energy Use FY 2002-14

