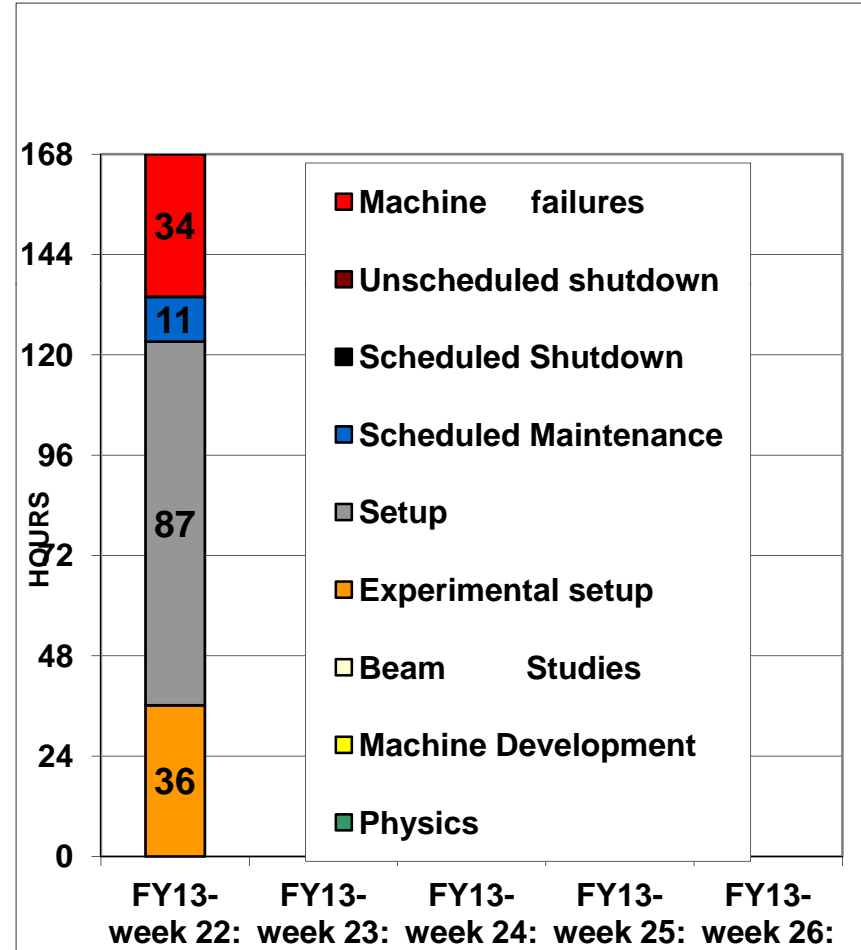
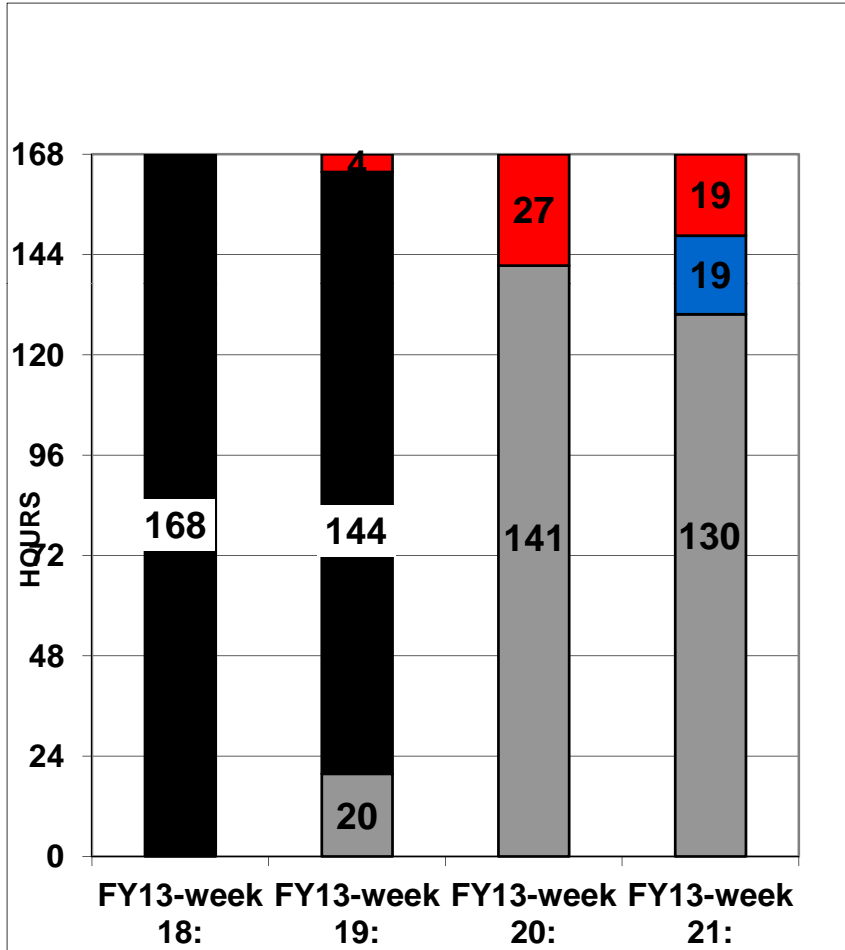
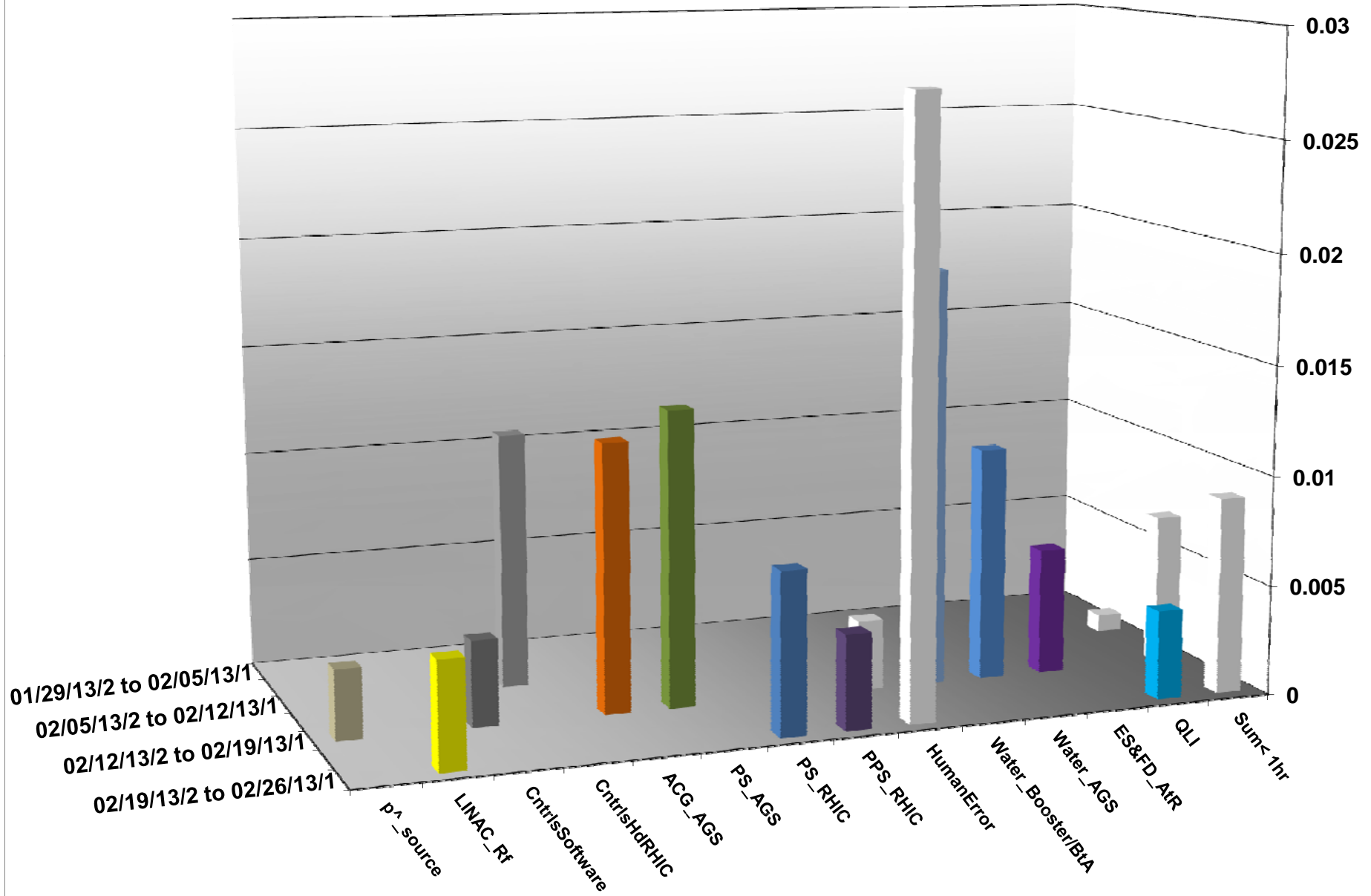


Availability February- March Run13

last week availability 78% previous week 87%



INTEGRATED FAILURES (GREATER THAN ONE HOUR) BY SYSTEM -- FEBRUARY 2013



INTEGRATED FAILURES (GREATER THAN ONE HOUR) BY SYSTEM MARCH 2013

AtR_ps

Xarc90, trips off

Uarc8 oscillating

PS_RHIC

Oscillations on Bmains

Bi7-qf4 breaker

PPS_RHIC

Abort kicker prefires

RF_RHIC

Y beam debunch – human error config

CryoRHIC

2:00 PLC replaced

Human Error

TAPE & wfgman config

TAPE config for 10Hz GOFB

BLM pulls permit

Tuning – finding chrom settings

QuenchProtect

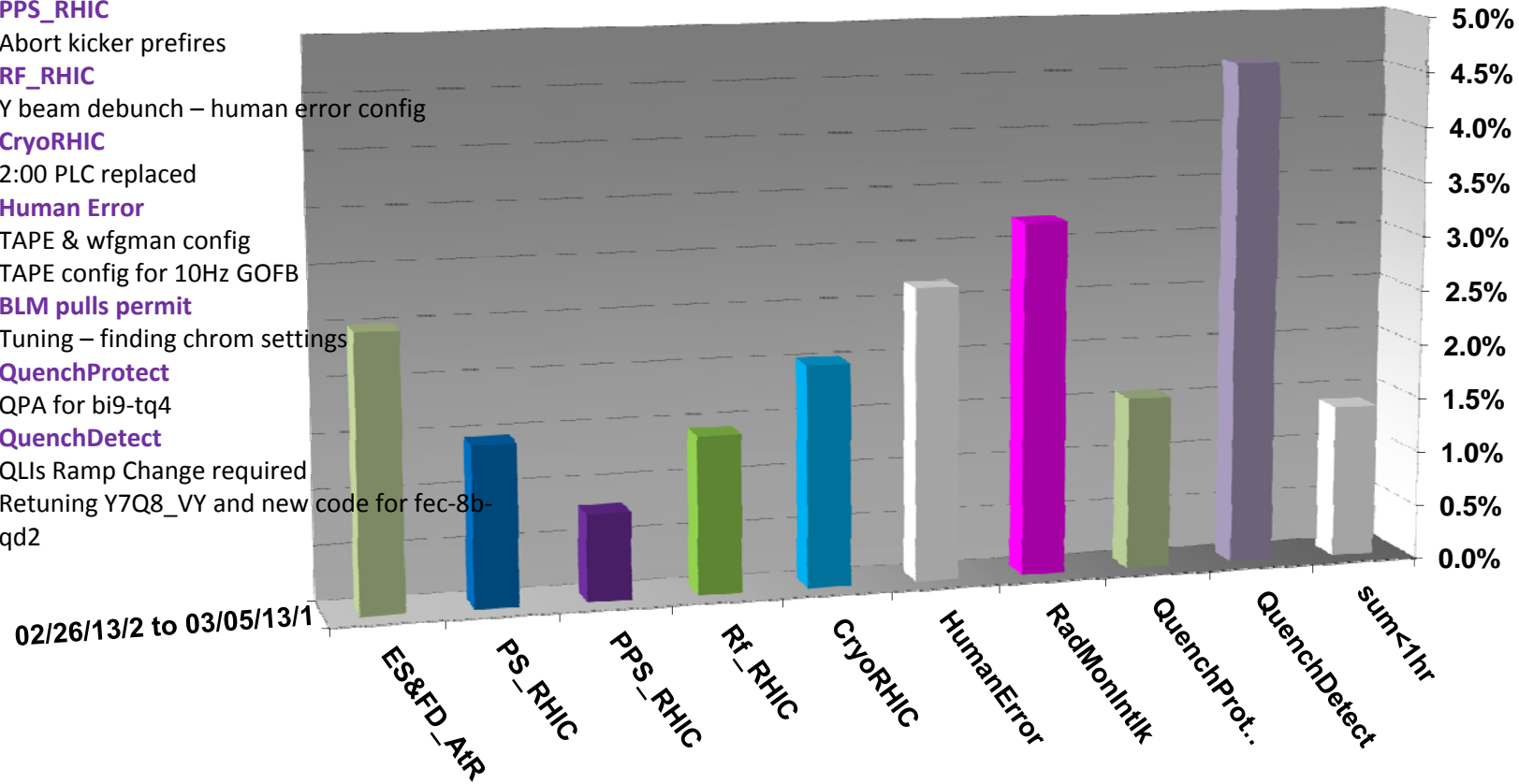
QPA for bi9-tq4

QuenchDetect

QLIs Ramp Change required

Retuning Y7Q8_VY and new code for fec-8b-

qd2



02/26/13/2 to 03/05/13/1