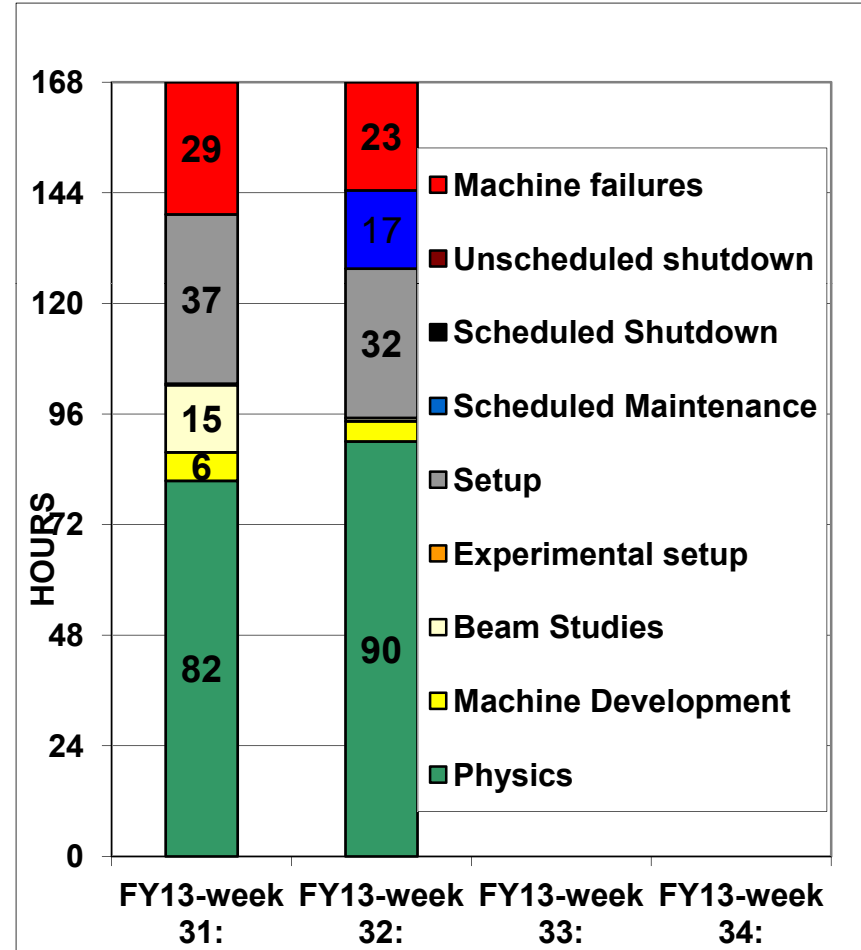
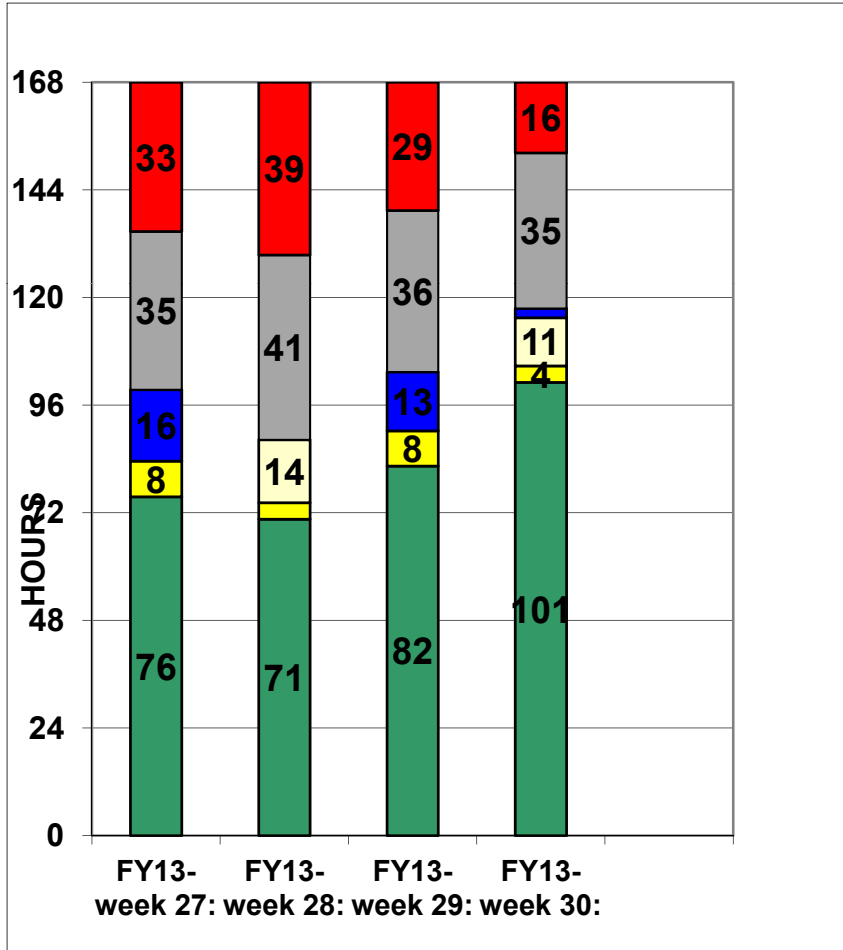
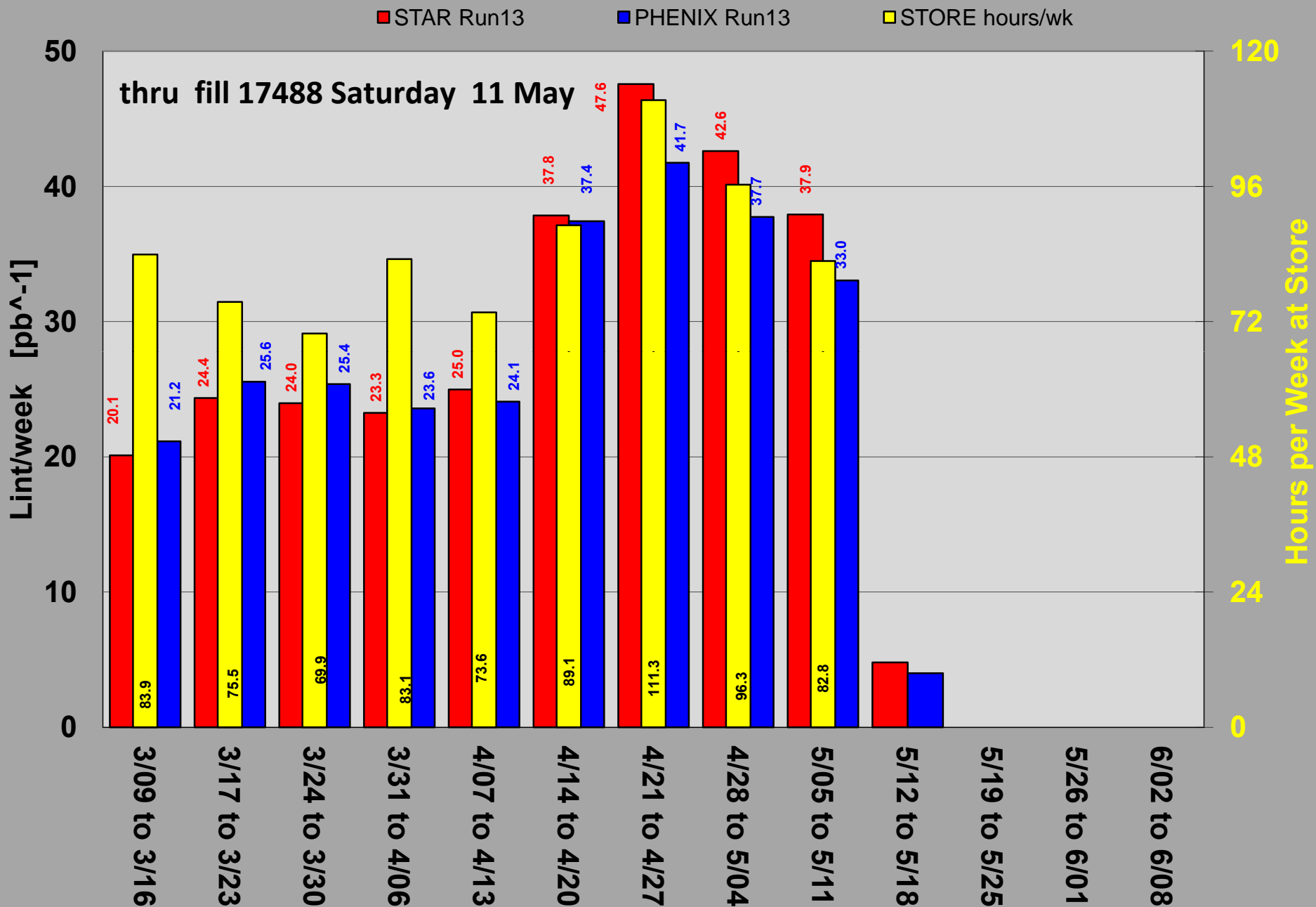


Availability April-May Run13

last week availability 84% previous week 83%



Run13 ($\sqrt{s}=510$ GeV) p^p^ Integrated Luminosity by Week



INTEGRATED FAILURES (GREATER THAN ONE HOUR) BY SYSTEM -- MAY 2013

LINAC/Rf

Mod 3 Power Tube "spring ring" - Saturday

P^source

Vaccum leak

RHIC/Rf

Screen supply for BA1

Experiments

Jet target

STAR HV mainframe

QLI

Beam Induced quench – Monday Evening

Vacuum/RHIC

Gauge controller sector 9

Human Error

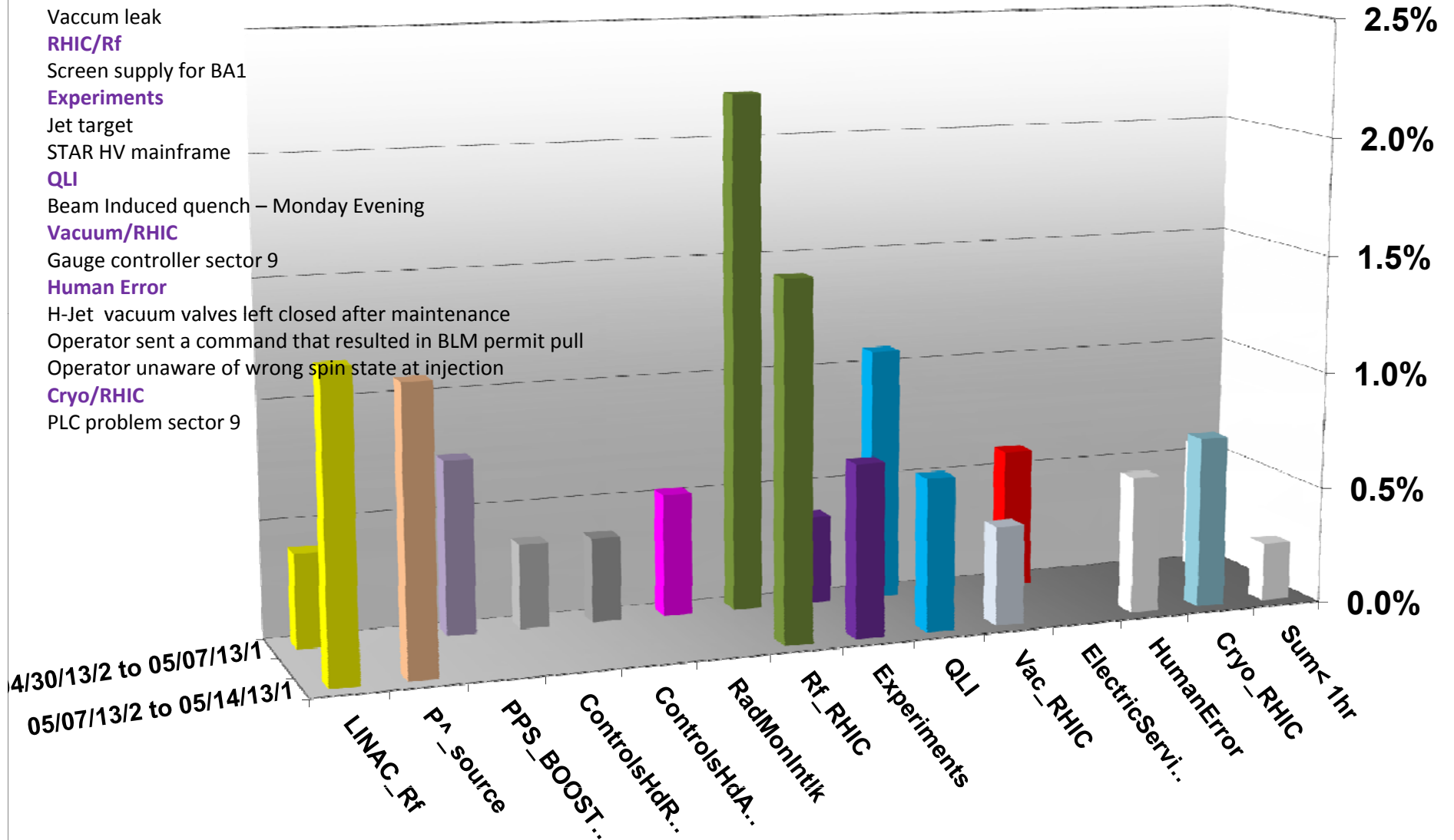
H-Jet vacuum valves left closed after maintenance

Operator sent a command that resulted in BLM permit pull

Operator unaware of wrong spin state at injection

Cryo/RHIC

PLC problem sector 9



RHIC Run-13 delivered luminosity - $p^+p^- \sqrt{s} = 510$ GeV

