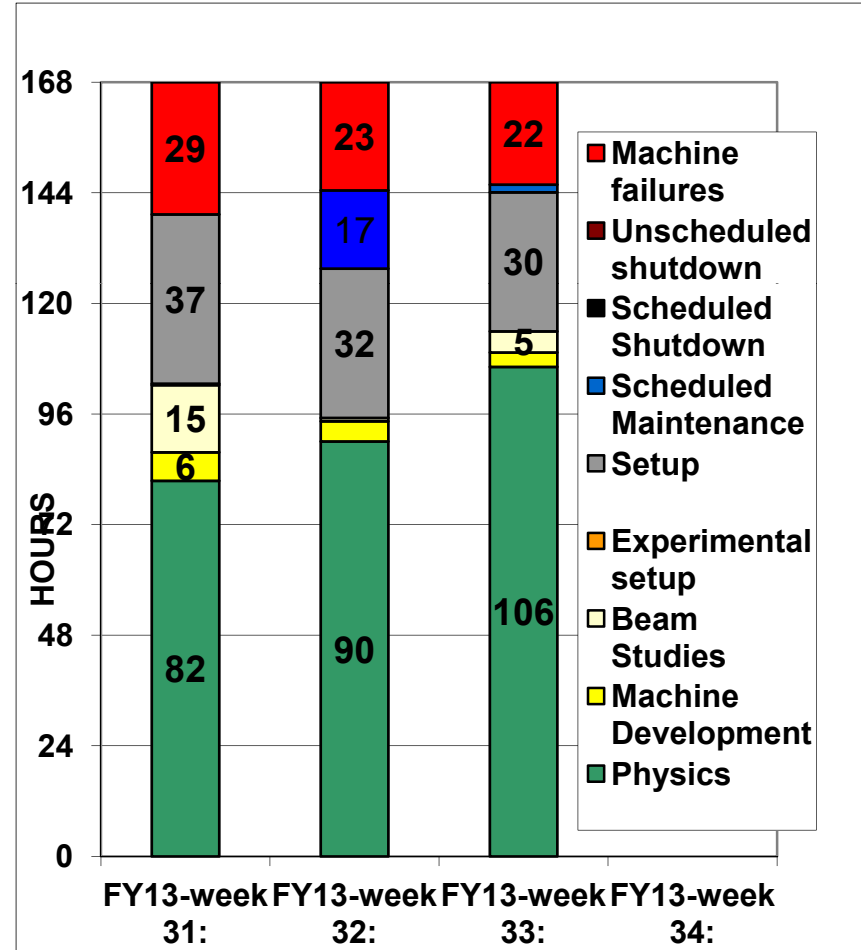
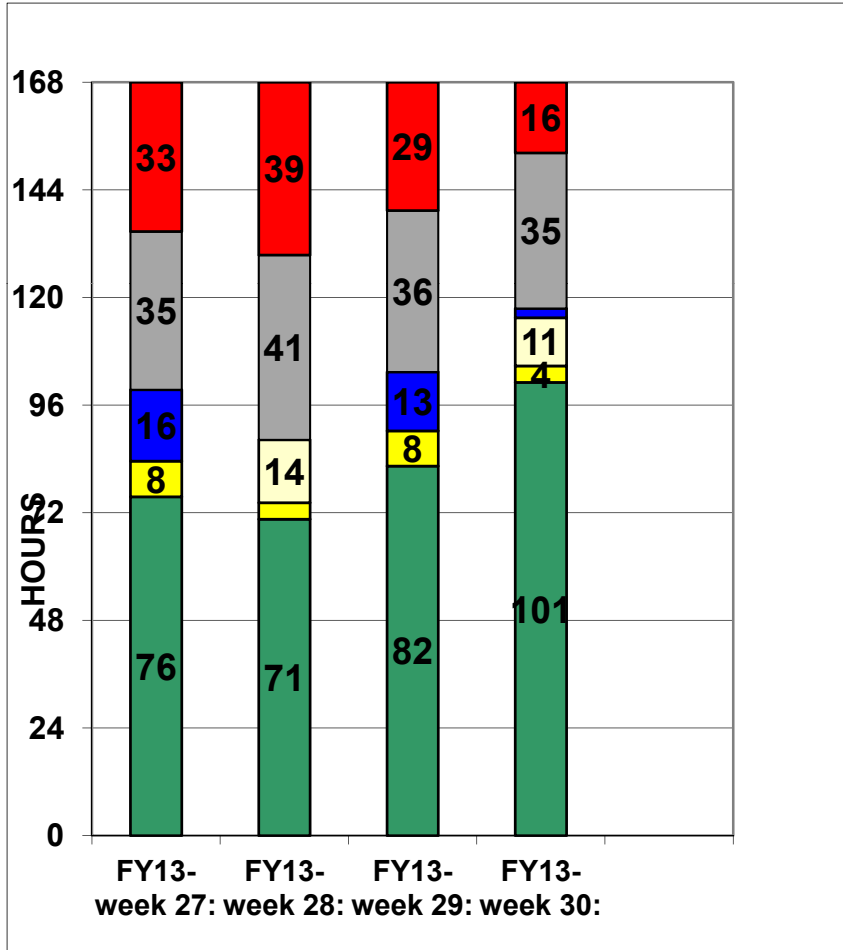
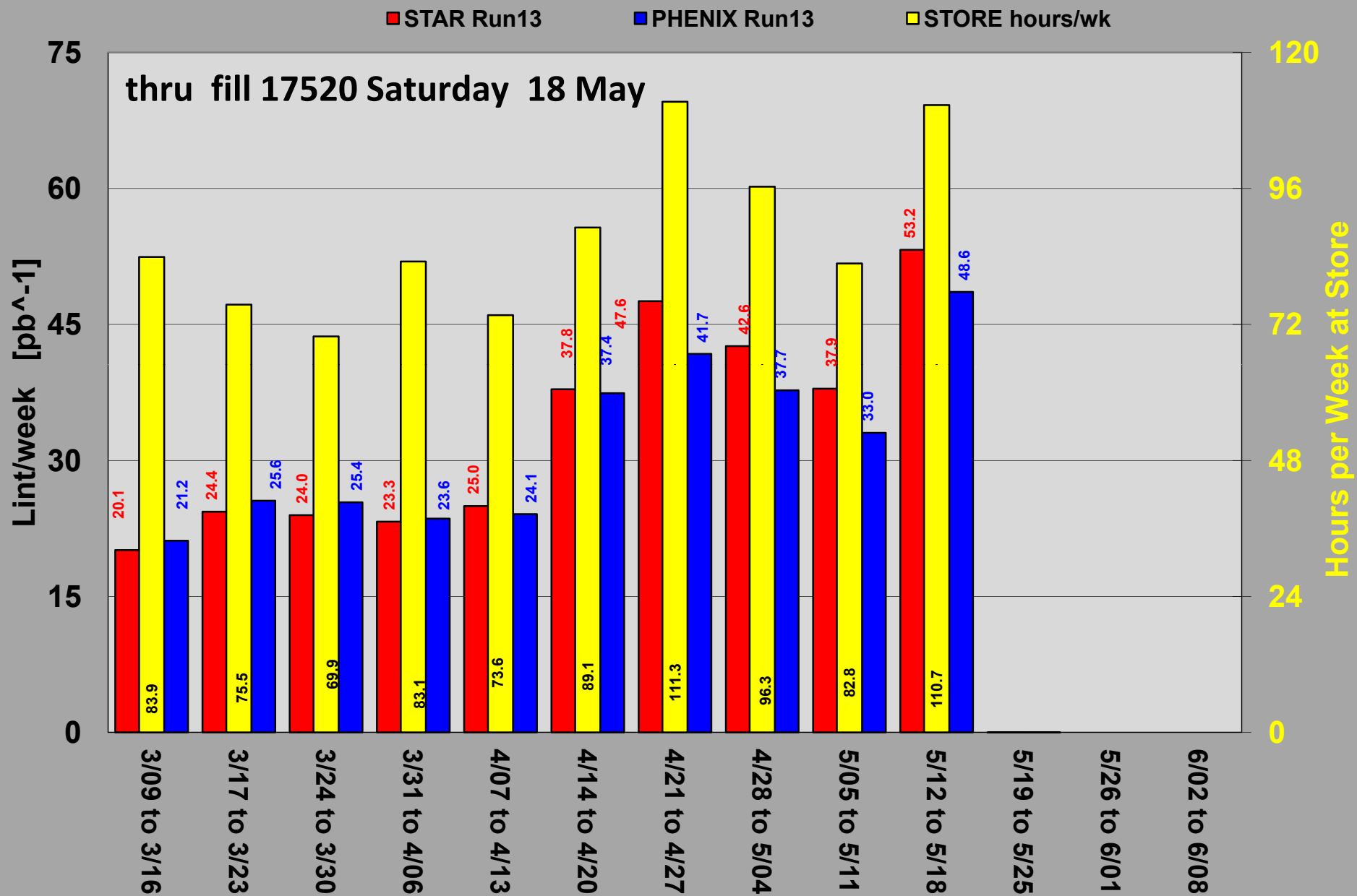


Availability April-May Run13

last week availability 86.7% previous week 84.5%



Run13 ($\sqrt{s}=510$ GeV) $p^{\wedge}p^{\wedge}$ Integrated Luminosity by Week



INTEGRATED FAILURES (GREATER THAN ONE HOUR) BY SYSTEM -- MAY 2013

LINAC_Rf

Mod 9 blower motor

AGS_Rf

Intermittent contact in a NIM module

ControlsSoftware

Corrupted ramp rate settings for abort kickers

PulsedPower

Y abort kicker prefire => QLI 2x

RHIC_PS

bo7-tq4 swapped out

bo6-qf2 tipped – pulled permit link

RHIC_Rf

Power amplifier for BA2 replaced

9MHz tripped at store => QLI

ESHQ

Failed smoke detector 1:00 Sunday

COOL_AC_RHIC

STAR AC unit

