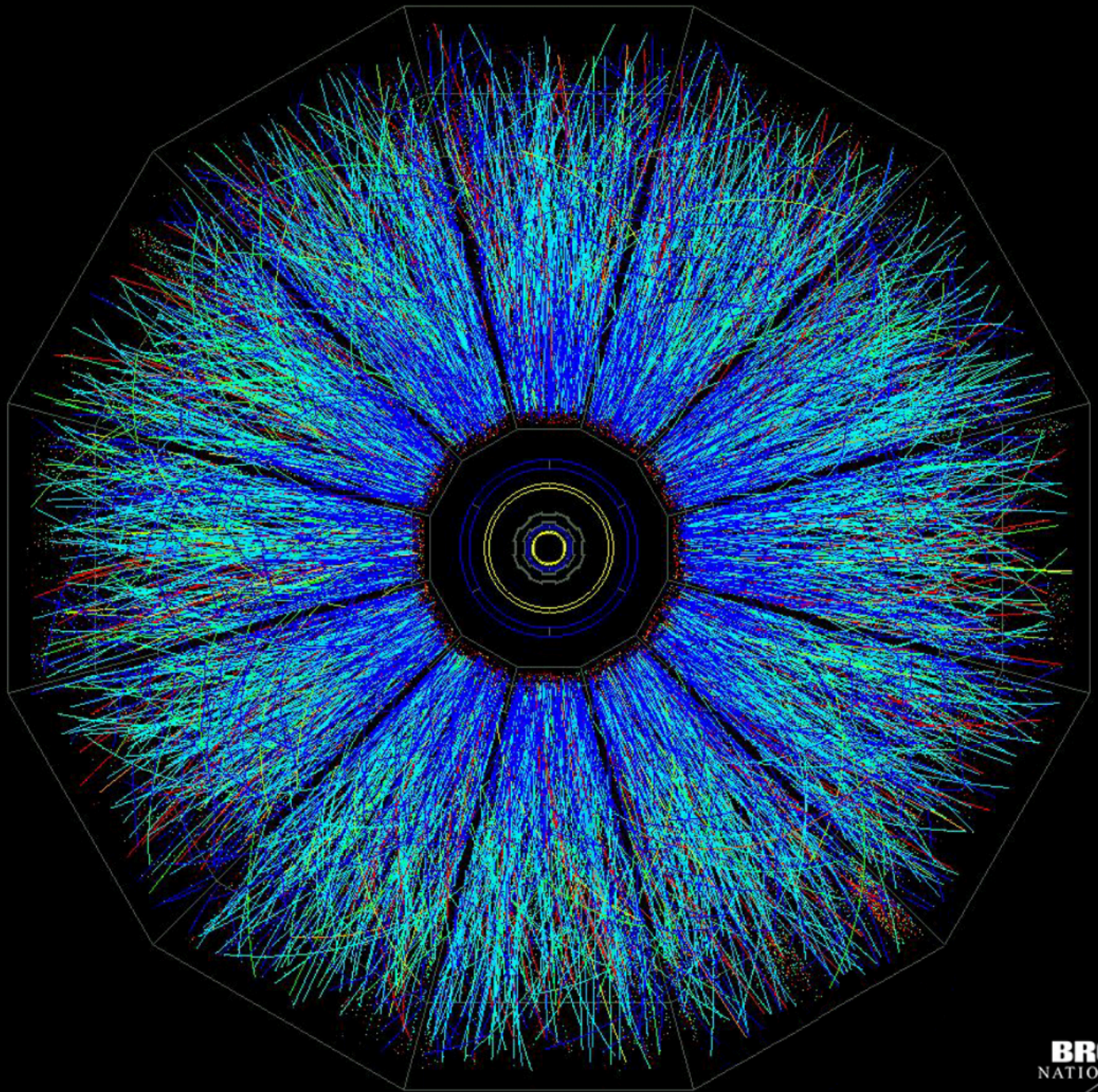


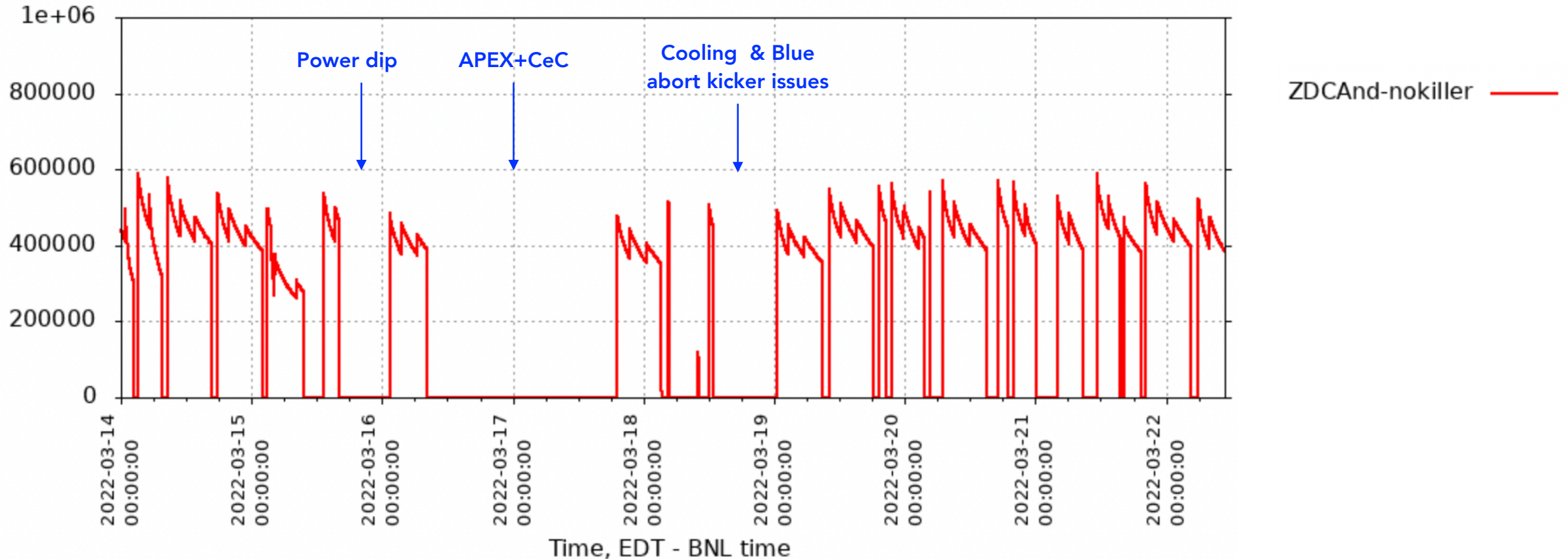
STAR Status Update

Sooraj Radhakrishnan
March 22, 2022



Overview for the week

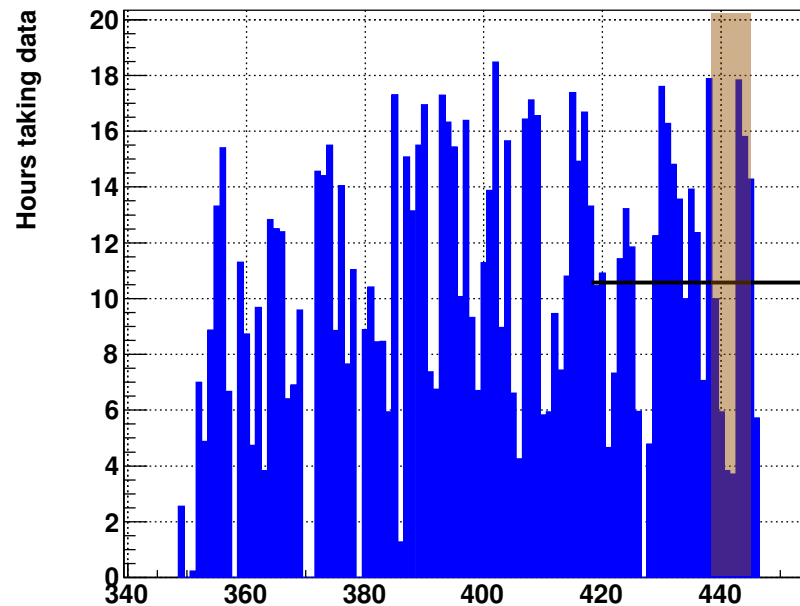
- Power dip and dedicated times for APEX and CeC early in the week
- Dedicated STAR running without much interruption over the weekend
- pC spin direction study on Friday, Vernier scan yesterday



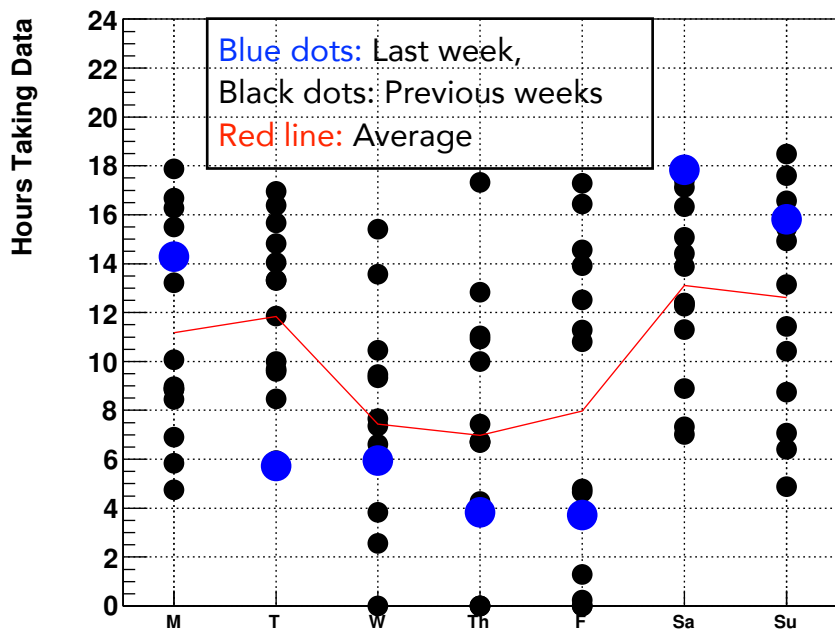


- Last Week (Previous Week):
 - Avg. hrs/day = 10.8 (12.8)
 - Avg. Samp.Lumi/day = 3.4 pb⁻¹ (4.24 pb⁻¹)
 - Comparable to avg. weeks

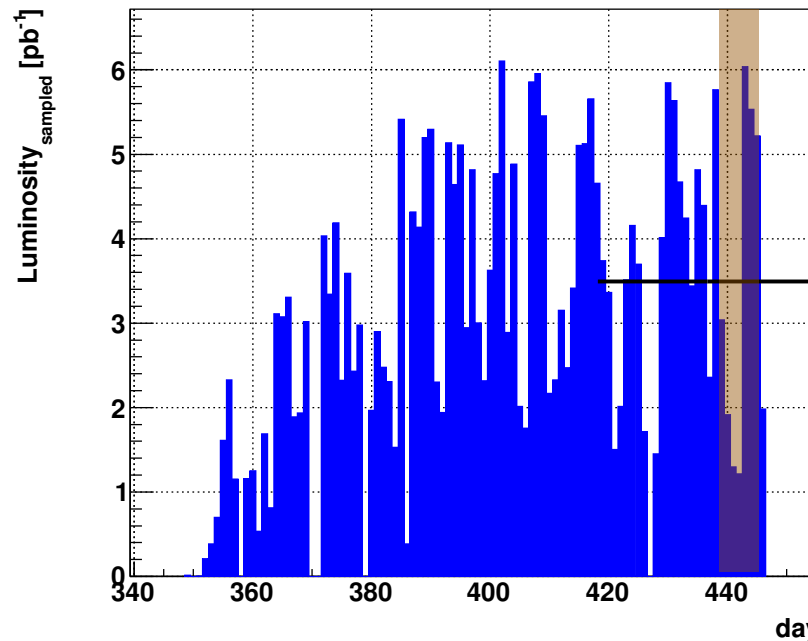
DAQ hours per day

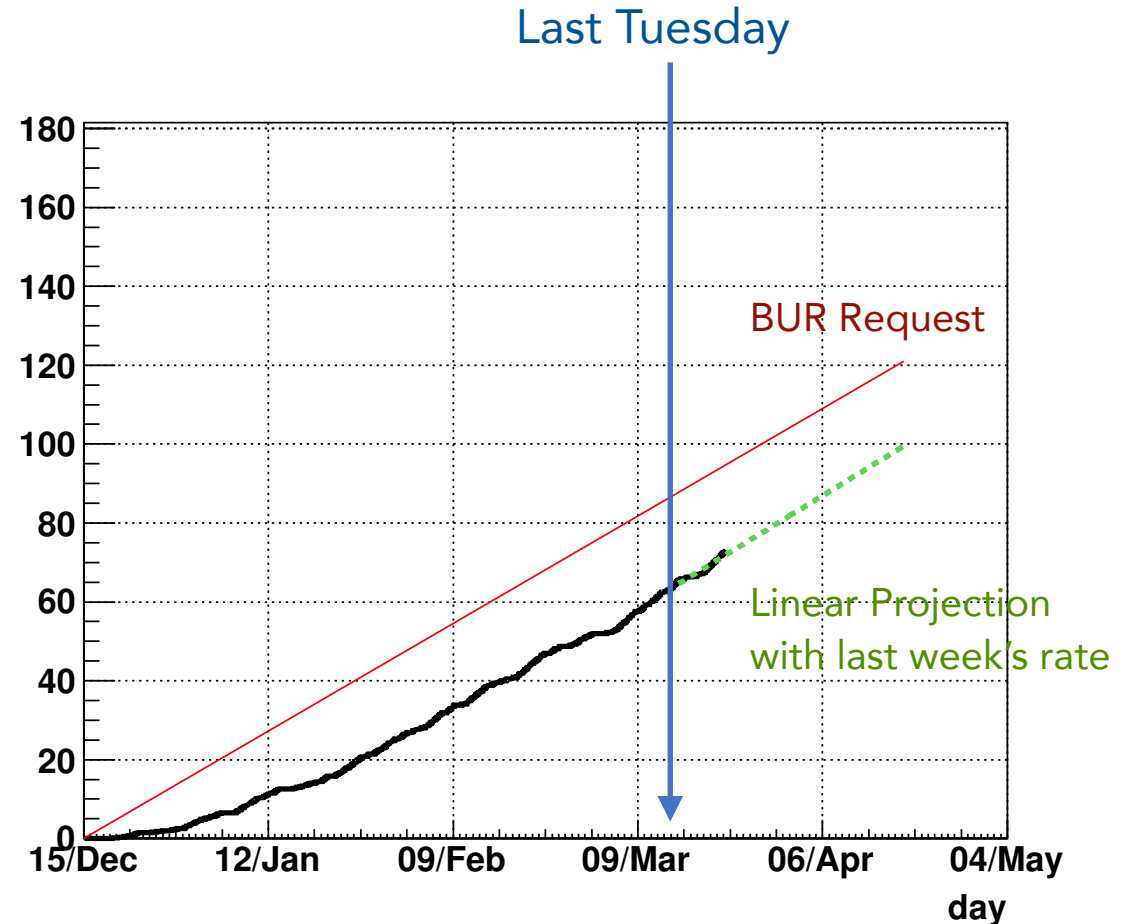
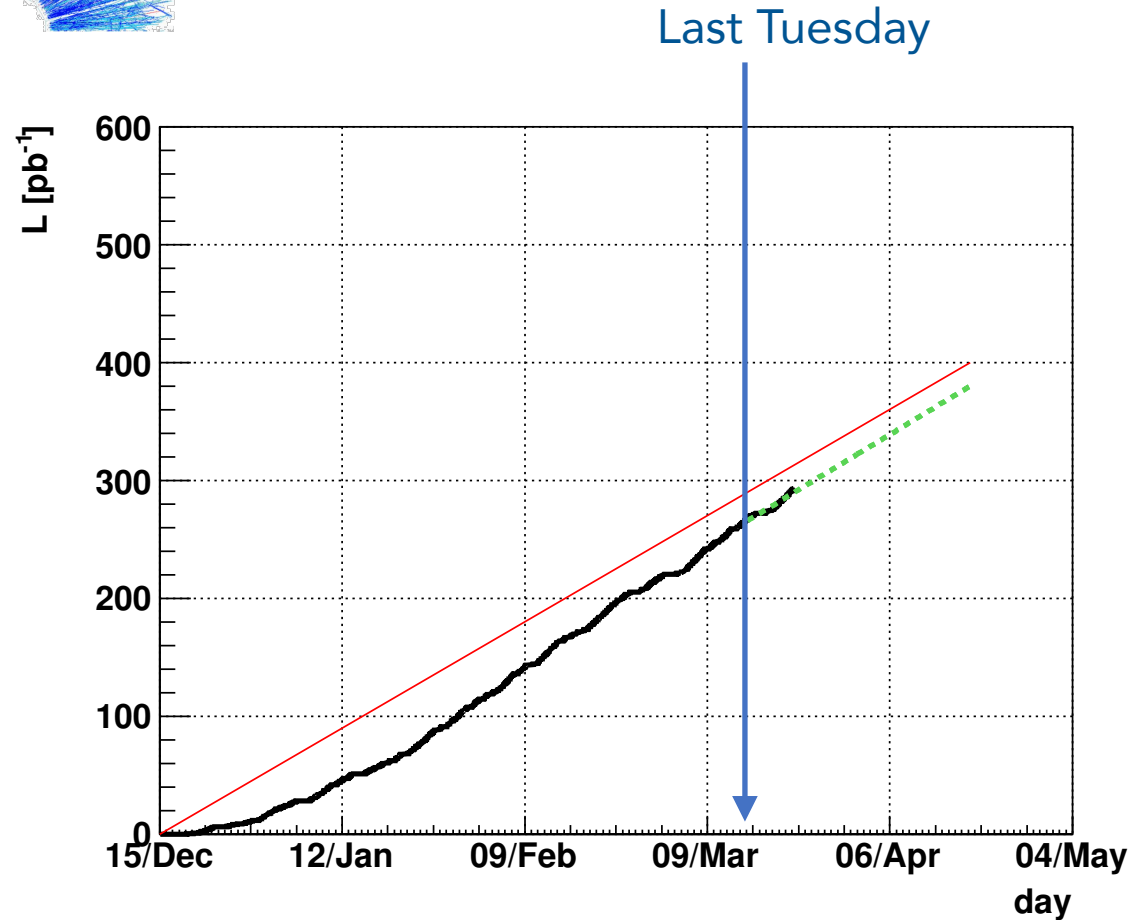


Hours per day distribution



Sampled Lumi. per day





- BUR request $P^2L = 120 \text{ pb}^{-1}$
- Currently at $P^2L = 73.0 \text{ pb}^{-1}$, 61% of BUR goal. 7.2 pb^{-1} from last week for P^2L
- Projection to reach $P^2L = 100 \text{ pb}^{-1}$ by end of run