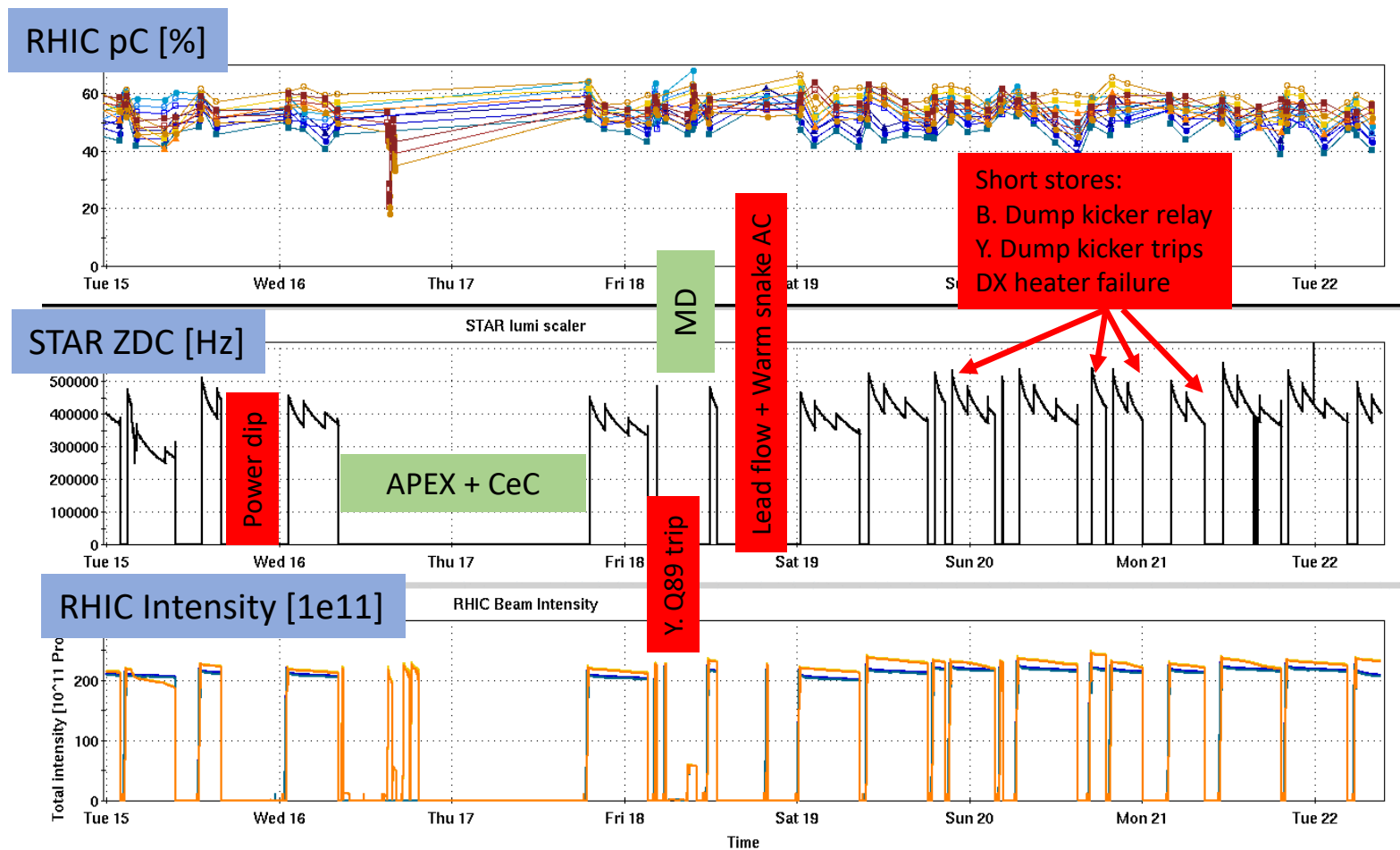


RHIC Run 22 Run Status

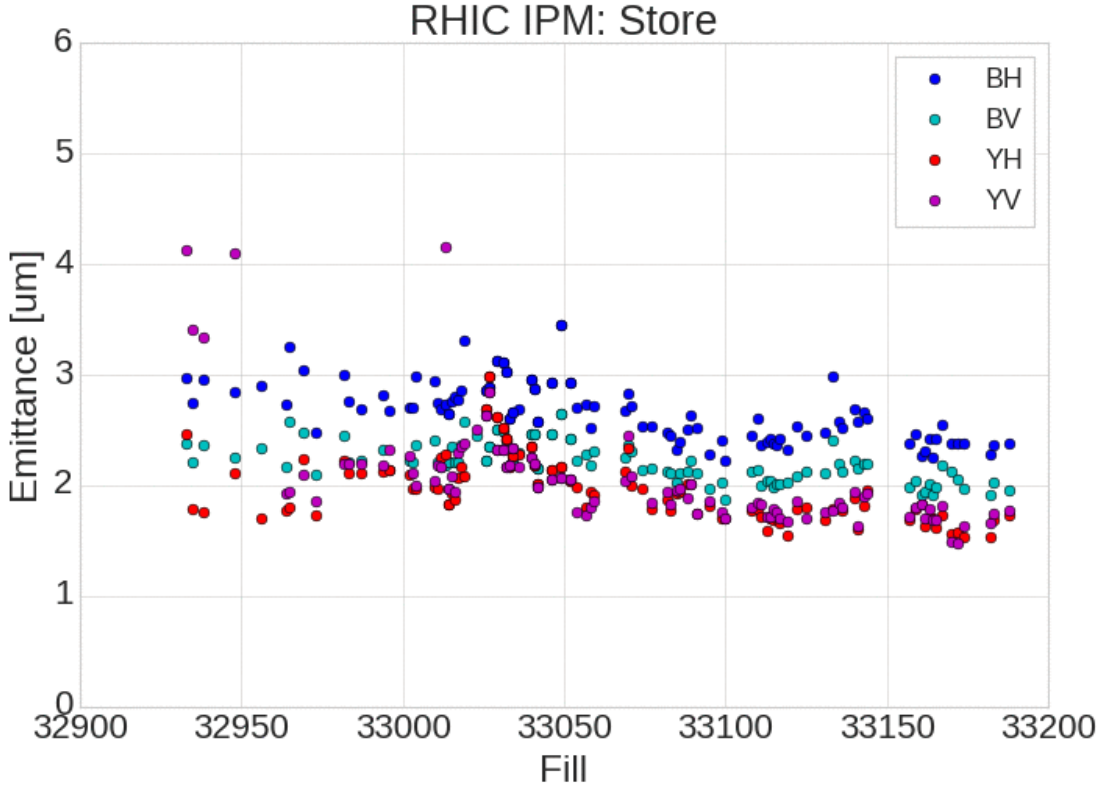
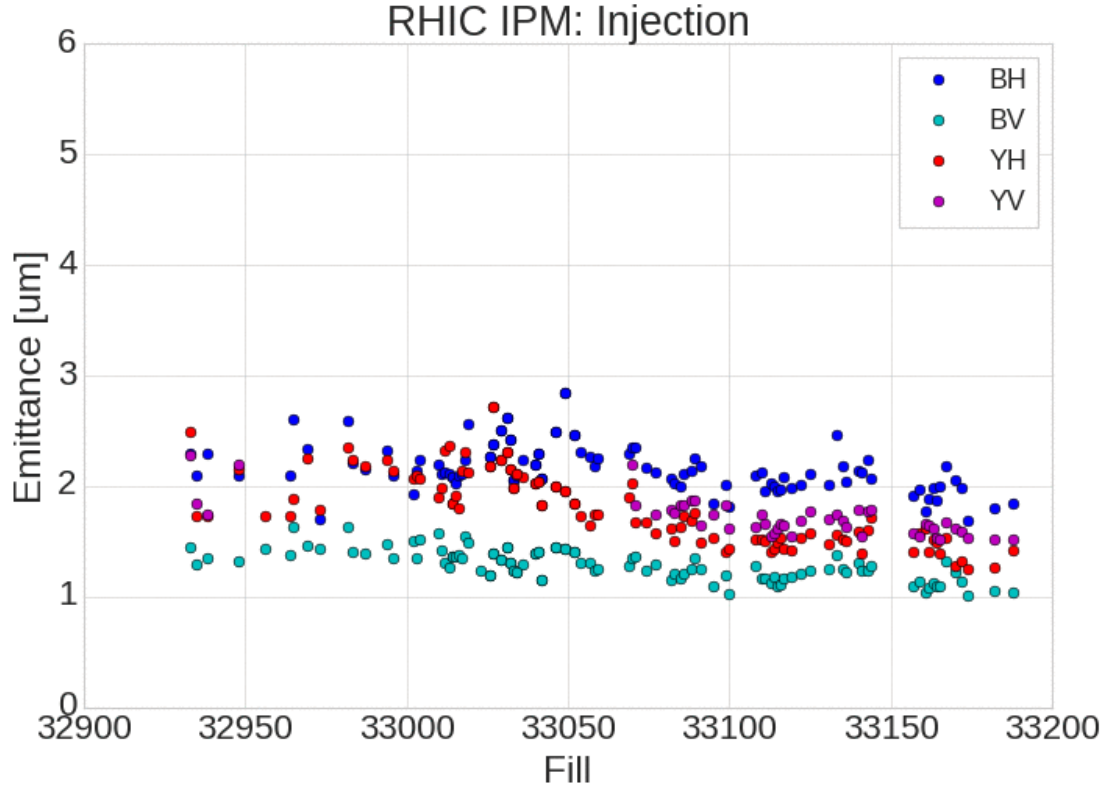
3/22/2022, V. Schoefer

- Store quality very consistent since switch to Siemens
 - Polarization ~55% in both rings
 - Average luminosity on target
- Contiguous 1.5 days away from physics for APEX and CeC
- Downtime from multiple sources:
 - Power dip (again)
 - E10 house AC unit (E20 warm snake trips)
 - Many shortened stores
 - Chronic yellow abort kicker trips
 - Dx heater failure
- Plan Friday to re-try measurement of stable spin difrection at pC polarimeters
 - Redesign orbit bumps to avoid corrector limitations



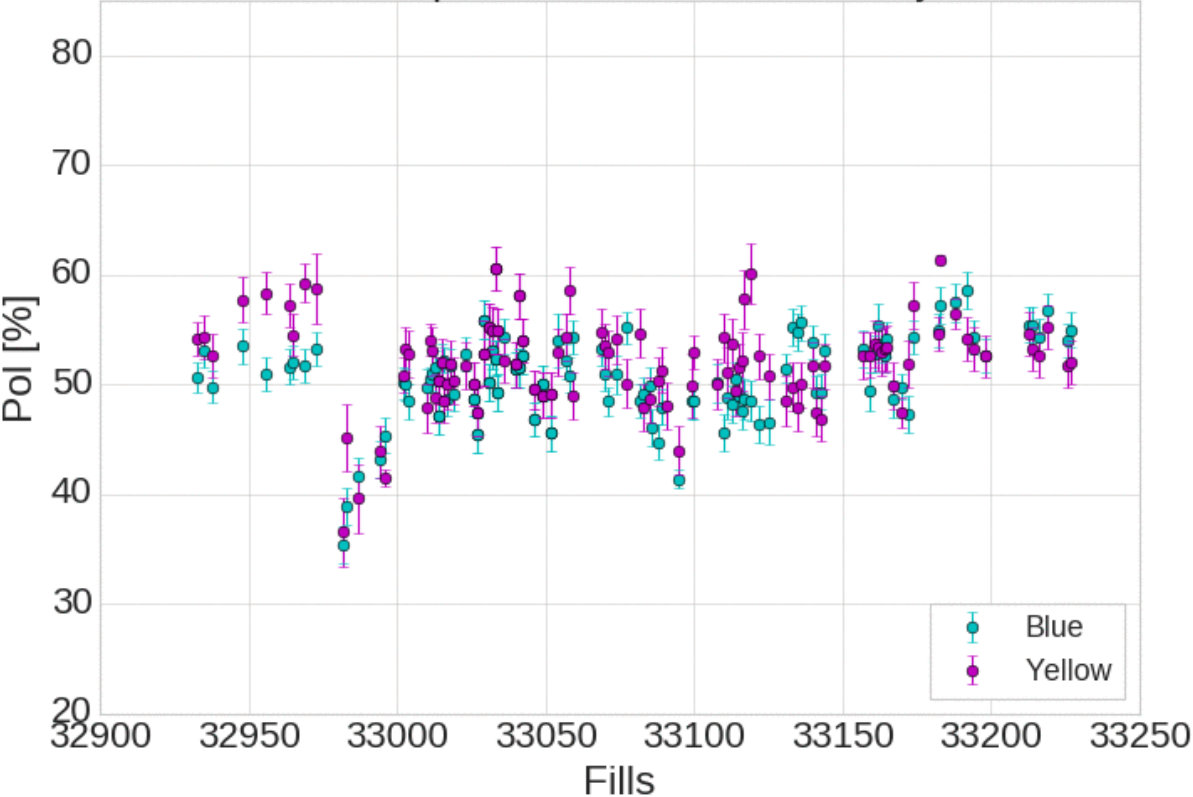
RHIC Emittance

- RHIC emittance consistently low for fills in Siemens
 - More apparent at injection than store



RHIC Polarization

RHIC pC Polarization, RHIC Inj



Jet pol

