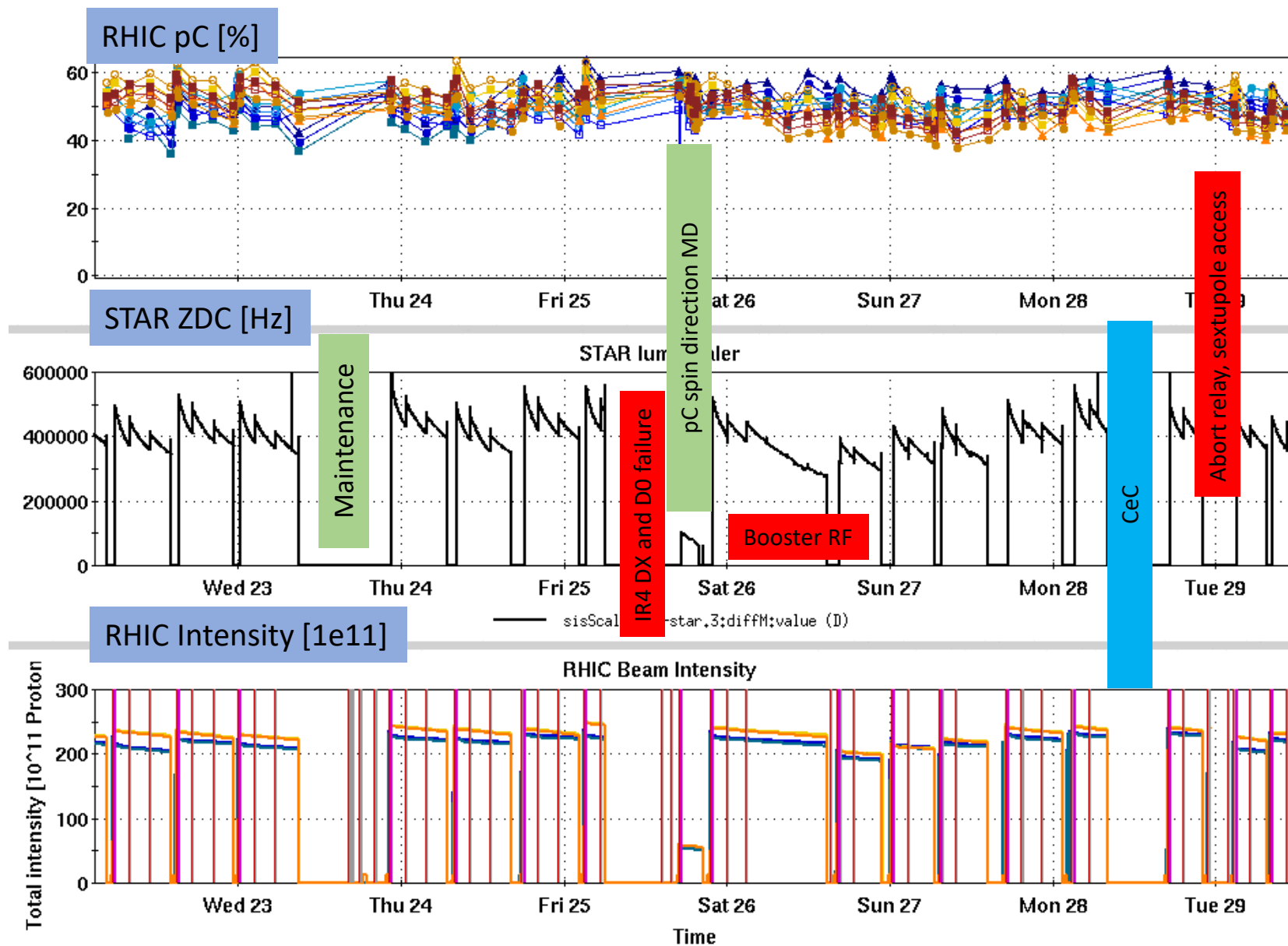


# RHIC Run 22 Run Status

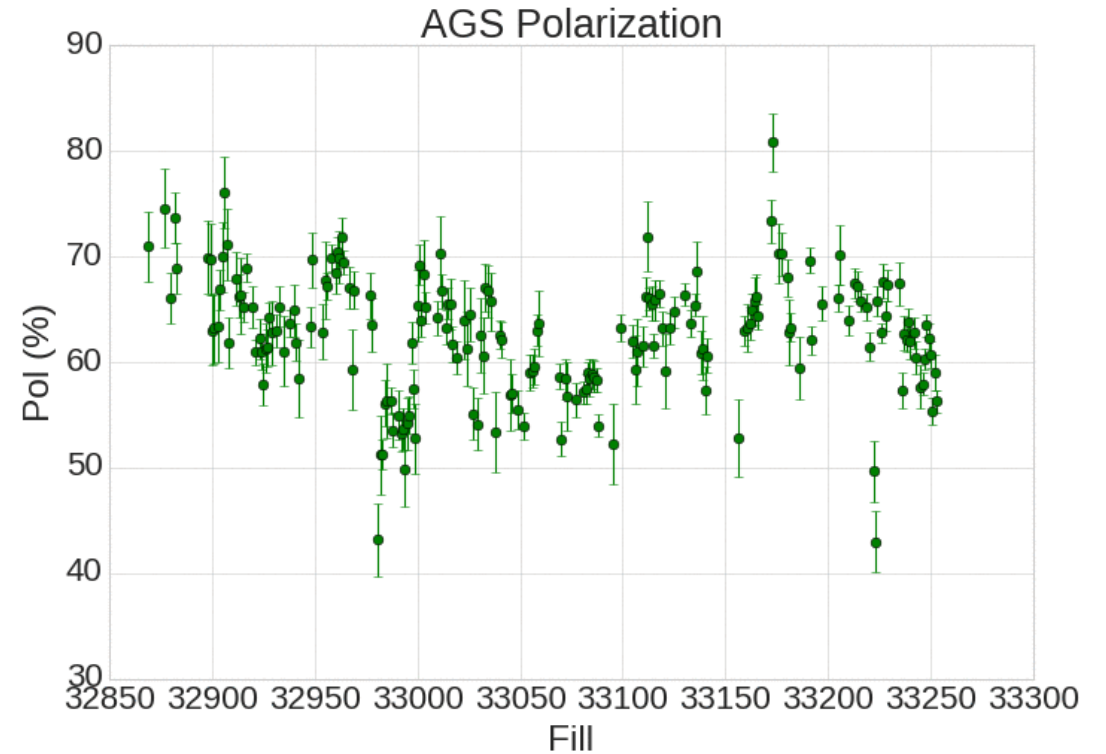
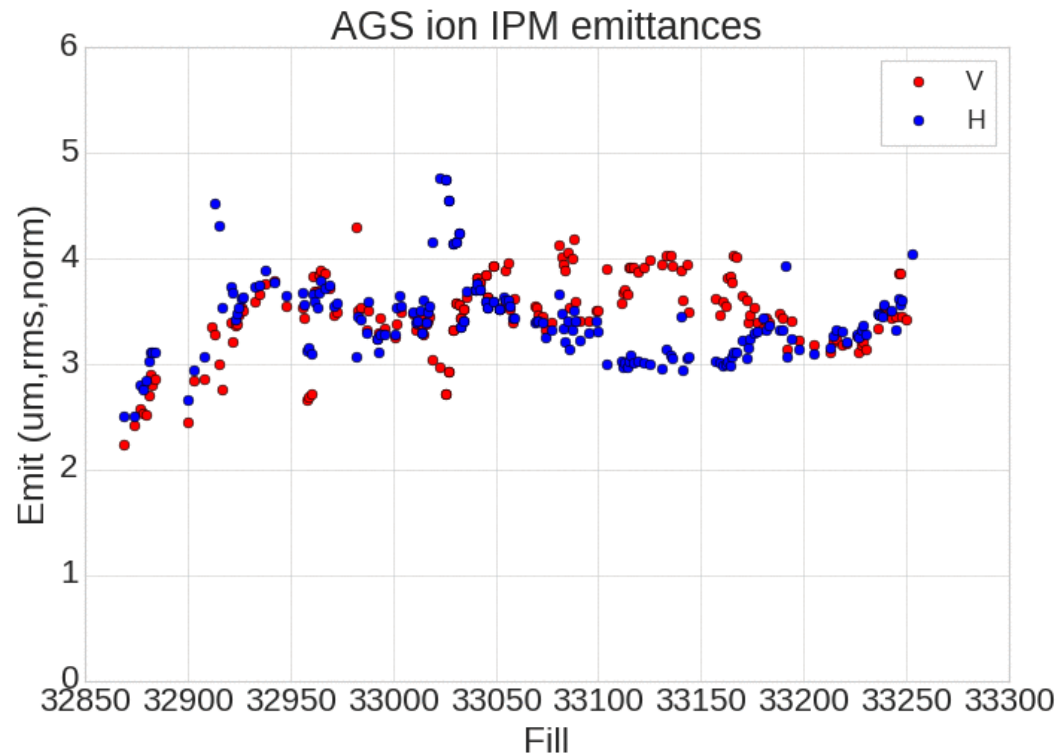
3/29/2022, V. Schoefer

- Difficult weekend
  - Long downtime on Friday
  - Booster RF failure affected lumi and polarization for several stores
  - Performance generally lower relative to previous optimum e.g. (fills 33205-33220)
- Stable spin direction measurement at the pC polarimeter done on Friday



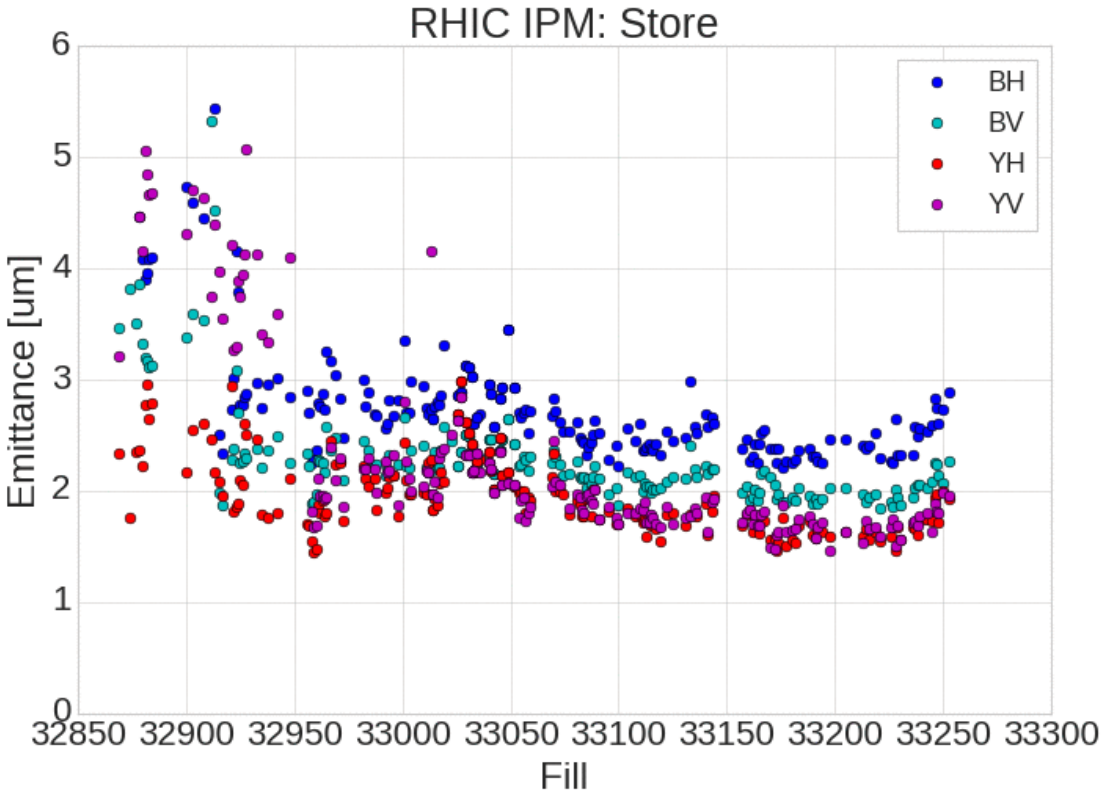
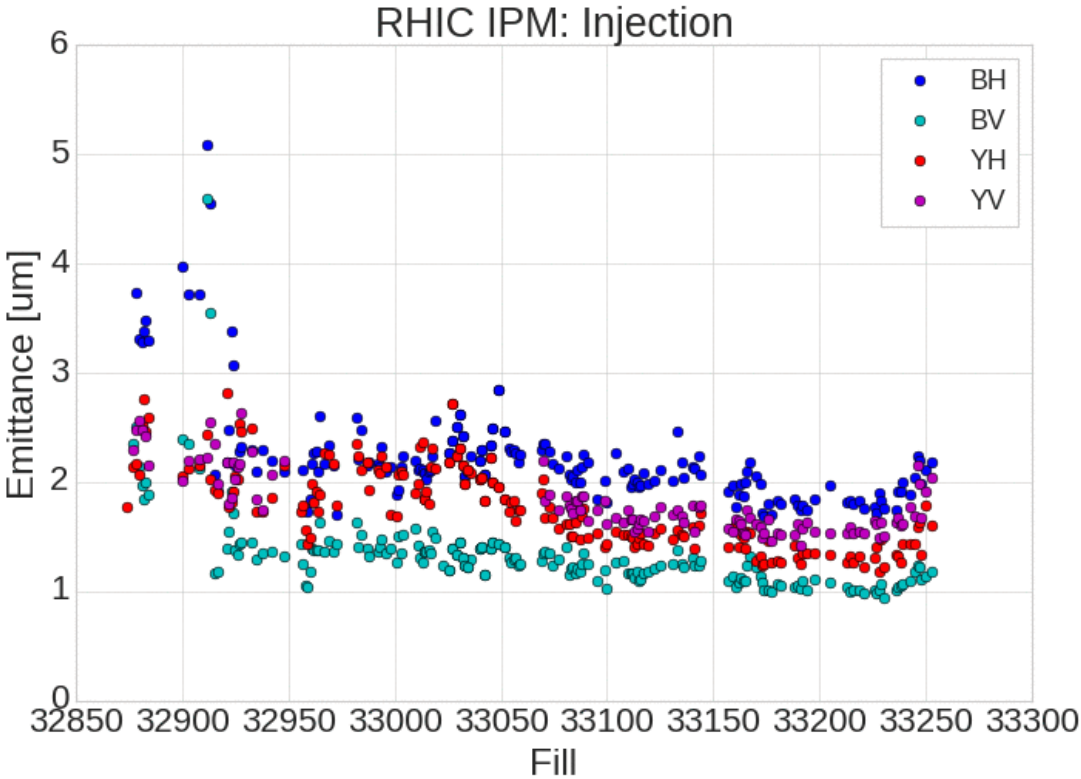
# AGS Emittance and Polarization

Some weekend fills affected by Bootser E6 failure (larger emittance)  
Emittances still larger than previous optimal performance.



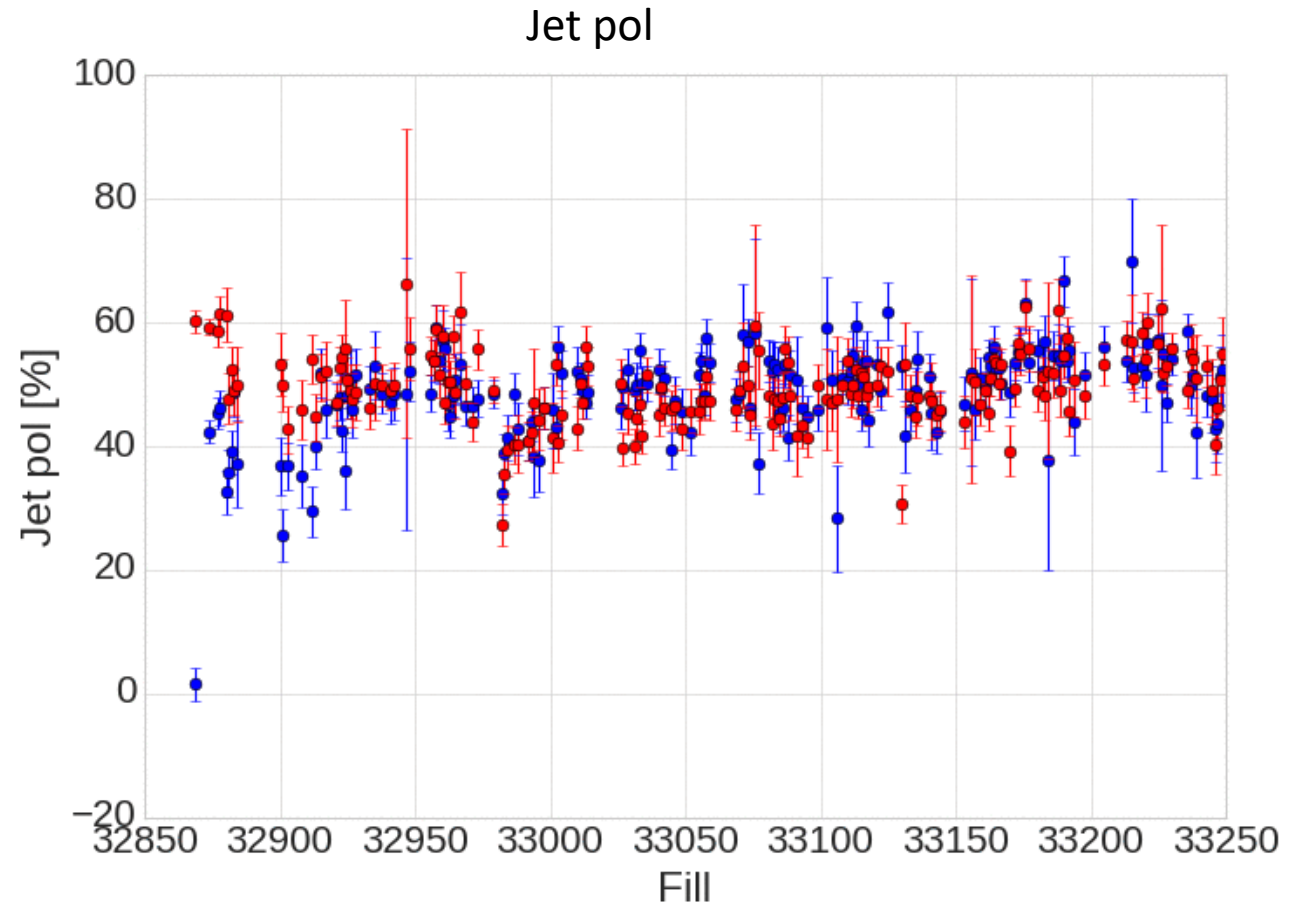
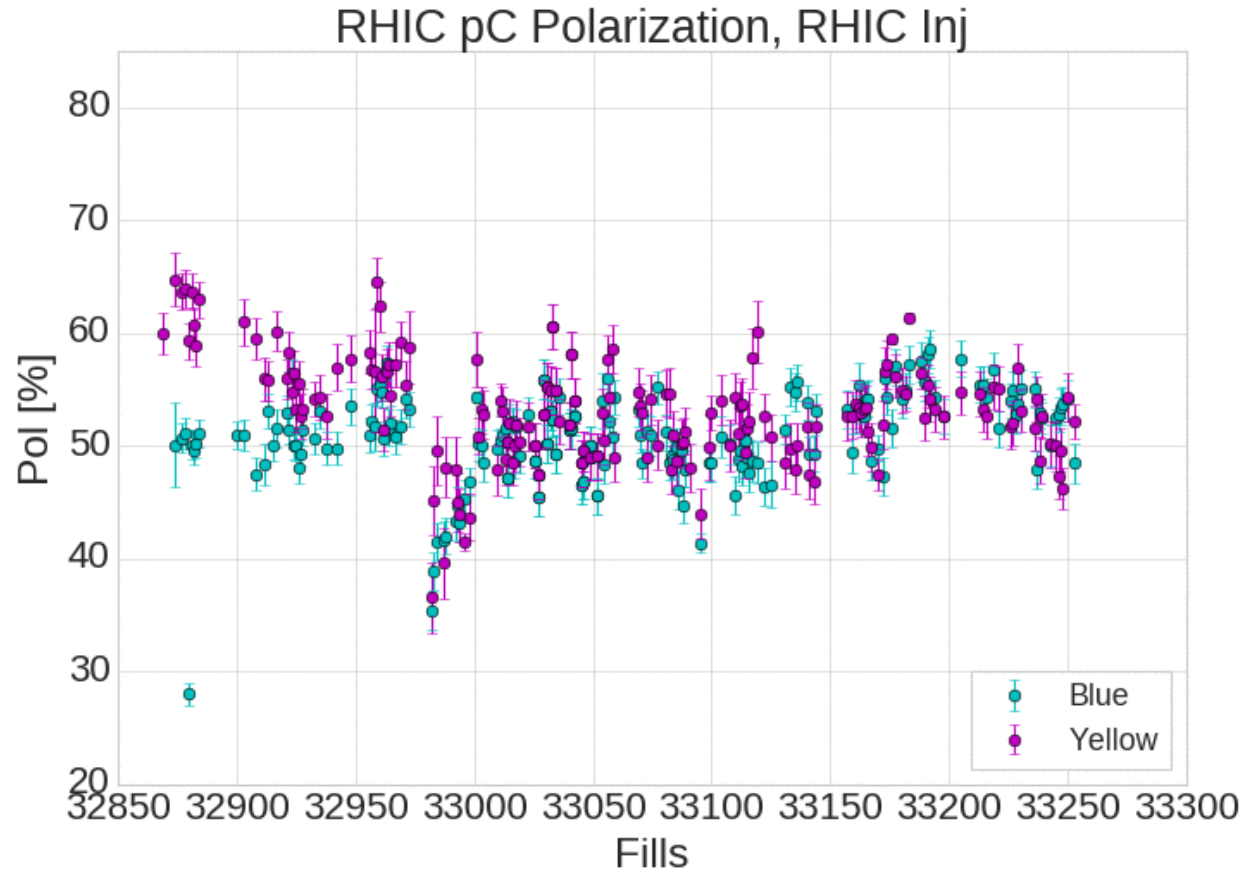
# RHIC Emittance

- AGS larger emittances clearly propagating through to store



# RHIC Polarization

Most recent 2 fills are in the lower 50s. Weekend average in the 40's.



# Plans

- As much physics as possible
  - 20 days remain in run
  - CeC has ~12 dedicated days remaining
- Development, including spin direction measurements are finished except for any last minute refinements or verifications